

### What's New Service Release 4 (Version 16.9.126)

#### NEW:

- Added Pillow Shape to standard stencil shapes
- Added Step Outlines command
- Added Macro ADDDIMENSION
- Added Macro to launch print of paste report
- Added Macro to generate part info layer
- Added Macro to export Stepped Stencil

#### ENHANCEMENTS:

- Added "Paste to Paste" Errors to the Paste Layer Report
- Added Modified Date Column to Footprint Library
- Added optional registry value to force on 2-pin orientation check
- Added Warning Message in the Log when overwriting an existing macro
- Output full version number when exporting Gerber comments
- Part highlighting from Navigator now honors grouping and sorting
- Part Numbers from ODB++ now maintained and displayed in Navigator and FPL
- Added support for nested blocks in Sieb & Meyer Import

#### FIXED MISC

- Fixed justification issues with certain parts
- Incorrect Offset, gets progressively further off each time it is generated in special scenario
- Importing EDA data on this ODB++ results in "illegal d-code" messages in the log
- Quick Convert issue fixed
- Shapes with trailing double quote fail after close and re-open.
- Sieb & Meyer import dialog issue fixed
- Issue importing these ODB++ with the EDA option
- Problem loading this 2581 file
- PRINTPASTELAYERREPORT PRINTLINE2TXT is using the wrong string
- Setting the background color in stencils doesn't stick
- Problem with disappearing pad during generation when data source is ODB++ with no copper layers
- Setting pin shape to <none> after having another shape is now working
- Paste generation location incorrect when justified with 1:1
- Stencils doesn't find all matches of this custom with different rotations
- Rename of Device field in the FP Library

- SAVEPASTELAYERREPORT issue
- URL in IPC2581 export updated
- Part Identification on rotated footprint with customs is now working properly
- Fixed issue exporting Gencad from this imported ODB++
- TEXT macro block command now updates dialog
- Add support for Cam350 V14
- Add Text Dialog is cut off when display is set to 150% or above
- Clear customs are now viewing properly after running a macro
- Percentages now available in replacement shape justification offsets
- Pad to Pad and Paste to Paste spacing checks miss these locations on bullet apertures
- These DPF files cause a problem during import
- Stencil thickness can now be set automatically from registry value.

### **What's New Service Release 3 (Version 16.9.90)**

- Unique ID on design files should be changed during Save As
- EXPORTFORMAT Macro command fixed
- ODB++ import added support for ID parameter in stephdr
- 1:1 Paste shapes use faster generation method
- 2581 Part Association issue fixed
- SMDTHRUHOLESPPACINGCHECK macro
- Stackup Editor – Fixed list issue when adding new material
- Isolated pad Removal issue on a particular design
- Problem loading a particular Cam350 file
- DXF missing data fixed
- Greatly increased the speed of the Footprint Library when it contains a large amount of customs
- Problem with reverse engineering single pin parts when "keep pins in selected order" option is on
- Footprint library merge issue. New footprint library merge abilities
- Fixed issues with customs and certain angles in Footprint Library
- FILEBROWSECONTROL macro fixes.
- DPF issue fixed
- Macro to adjust the radii on a given layer
- Part heights are now translated when available from ODB++
- Issue with Shape set Size on this part
- Background color setting saving
- Paste Layer Report Issue
- Request for macro command for Fill Closed Polylines command

---

### **What's New Service Release 2 (Version 16.9.69)**

**NEW PASTE LAYER REPORT** - New printable paste layer report has replaced the excel report option. This new ability allows customization of fields, addition of company logo, and direct printing of paste and additional layers as selected. Print to paper or a PDF to create a simple, portable document containing all the relevant paste layer information for review.

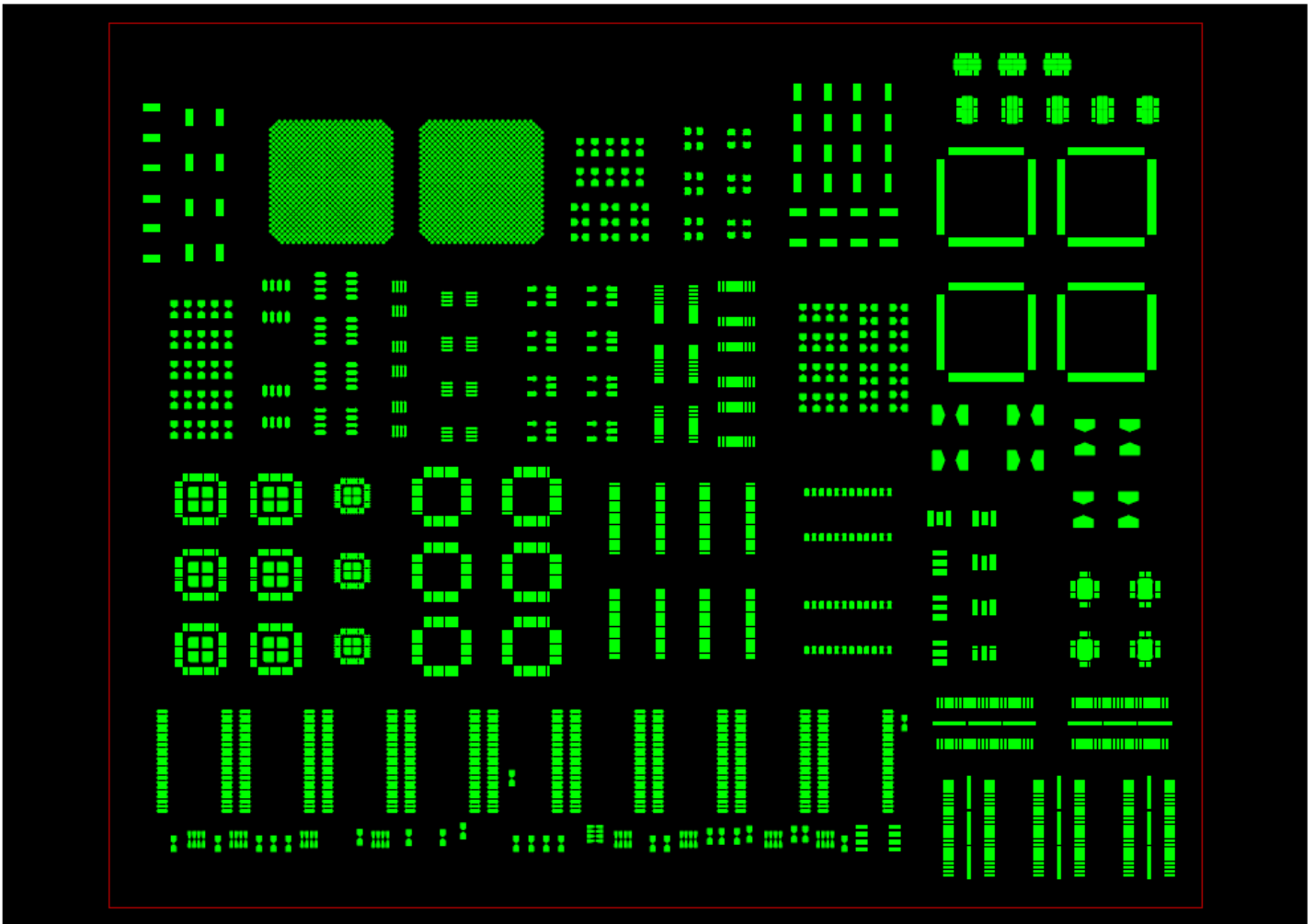


## Paste Layer Report

Design Name: WISE\_Stencil\_Demo  
 Design File: WISE\_Stencil\_Demo.vcam  
 Units: Inches  
 Thickness: 5.00 (Mils)  
 Area Ratio Limit: 0.660000  
 Aspect Ratio Limit: 1.500000

VisualCAM 16.9  
 January 17, 2019  
 10:50:02 AM  
 Layer: L3:TopPaste  
 Total Volume: 0.014567  
 Total Quantity: 4928

DCode	Shape	Thickness	X-Size	Y-Size	Radius	Pitch	Volume	Area Ratio	Aspect Ratio	Pass	Quantity
D77	Rectangle	5.00	0.024804	0.010629		0.019685	0.000001	0.744044	2.125748	Yes	48
D78	Rectangle	5.00	0.010629	0.024804		0.019685	0.000001	0.744044	2.125748	Yes	32
D81	Rectangle	5.00	0.095670	0.131103	0.019134		0.000061	5.813389	19.134016	Yes	4
D128	Rectangle	5.00	0.025200	0.045000	0.005040	0.050000	0.000006	1.688378	5.040000	Yes	48
D149	Rectangle	5.00	0.108000	0.045000			0.000024	3.176471	9.000000	Yes	14
D160	Oblong	5.00	0.025000	0.075000		0.050000	0.000009	1.950124	5.000000	Yes	16
D163	Oblong	5.00	0.075000	0.025000		0.050000	0.000009	1.950124	5.000000	Yes	32
D165	Oblong	5.00	0.070900	0.013000		0.025600	0.000004	1.130526	2.600000	Yes	32
D172	Rectangle	5.00	0.035100	0.014400		0.025984	0.000003	1.021091	2.880000	Yes	20
D173	Rectangle	5.00	0.027000	0.014400		0.025984	0.000002	0.939130	2.880000	Yes	20
D177	Rectangle	5.00	0.034000	0.088000			0.000015	2.452459	6.800000	Yes	10
D209	Bullet	5.00	0.060000	0.028000			0.000008	1.946400	5.600000	Yes	16
D210	Bullet	5.00	0.060000	0.028000		0.050000	0.000008	1.946400	5.600000	Yes	24
D213	Rectangle	5.00	0.008856	0.023031		0.019685	0.000001	0.639658	1.771260	No	48
D231	Rectangle	5.00	0.036000	0.045000	0.007200		0.000008	2.105736	7.200000	Yes	12
D233	Rectangle	5.00	0.056700	0.011700		0.025591	0.000003	0.969868	2.340000	Yes	60
D258	Oblong	5.00	0.010000	0.035400		0.019600	0.000002	0.808943	2.000000	Yes	48
D259	Oblong	5.00	0.035400	0.010000		0.019600	0.000002	0.808943	2.000000	Yes	48
D265	Oblong	5.00	0.070000	0.018000		0.031500	0.000006	1.483001	3.600000	Yes	396
D266	Rectangle	5.00	0.063810	0.009000		0.019685	0.000003	0.788751	1.800000	Yes	144
D267	Rectangle	5.00	0.009000	0.063810		0.019685	0.000003	0.788751	1.800000	Yes	144
D268	Rectangle	5.00	0.062010	0.009000		0.019685	0.000003	0.785931	1.800000	Yes	192
D270	Rectangle	5.00	0.042480	0.009000		0.019685	0.000002	0.742657	1.800000	Yes	144
D271	Rectangle	5.00	0.009000	0.042480		0.019685	0.000002	0.742657	1.800000	Yes	144



### **ADDITIONAL NEW IN STENCILS:**

- 11640 Right Click Option to Copy Stepped Area to all like Footprints
- 11587 Request for Created Date column in FPL report
- 11507 Added method to find stencil shapes that may change due to 16.9.69 updates. Added code to check for window paned shapes with rounded corners, generates the "AlteredPasteShapes.rpt" file in the directory the design file or footprint library file are being loaded from.

### **FIXED IN STENCILS:**

- 11630 Problem when attempting rename of filenames in Export Stepped Stencil dialog
- 11602 Paste not centered on pads
- 11521 FPL Library issue
- 11593 Identification issue that caused the library to get corrupt
- 11586 Pin locations should be stored in the FPL
- 11520 Rotated footprints not found by library
- 11480 Problem loading this footprint library
- 11504 Paste Rotation Issue
- 11446 Fixed a FPL compare dialog issue
- 11445 Footprint doesn't display in the 16.9 footprint library
- 11443 Paste locations offset incorrectly when Paste Pad Justification with offset used
- 11442 Window Pane shape issue with library from previous build
- 11450 Part outline not updating after angle change

- 11443 Paste locations offset incorrectly when Paste Pad Justification with offset used
- 11476 Individual pin justification problem
- 11467 Library pin is not correct angle
- 11474 Footprint library issue after saving of VCAM file and reopen
- 11453 One pin footprint selection is failing
- 11585 Thickness in Footprint Report Dialog behaves strangely

## **MACROS**

- 11643 NEW – AddPanelFiducialSet adds Mask, Top and Bottom Shape and Size to use
- 11596 NEW – User ID (UID 1010) Macro to assist in creation of custom drill to mask report
- 11575 FIXED - Pad Removal Macro Command should not run on PhyNet Layer
- 11570 NEW - User ID (UID 1008 and UID 1009) Macro to convert draws, arcs, polylines to individual drill hits on a new NC layer, with user specified pitch and number of revolutions.
- 11566 NEW - GetFirstItem optional argument to use the select filter
- 11556 NEW – LogMessage Macro to write messages to the log
- 11522 NEW - Add IsEmptyLayer, IsFreeLayer, and GetLayerFromType macro commands
- 11500 NEW - Macro command to SetLayerOrder
- 11499 FIXED - ADDVIEWTAB macro window values are MM instead of Inch
- 11492 NEW - Macro command to combine apertures of the same size
- 11490 FIXED - Stacked Pad Removal Macro command to honor Layer parameter
- 11451 FIXED - Create Panel from IDF Macro command needs to remove duplicate drills
- 11449 NEW - "SetAsVia" macro command added to set "Gerber" pads as via for use with DFM checks
- 4205 NEW – Allows you to clip all data inside or outside the border on a layer

## **PANELIZE**

- 11579 FIXED - Simple Panelize without virtualization is not working in the latest build
- 11565 FIXED - Virtual Panel - Multiple panels not regenerating correctly
- 11547 FIXED - Virtual Panel not working properly when editing the virtual panel layer set afterward

## **NC**

- 11607 FIXED - Import of NC Slot issue
- 11518 FIXED - Drill chart ignores rotation / SR 600038035

## **ODB++**

- 11594 FIXED - These ODB++ designs from Valor don't import due to unrecognized data
- 11582 FIXED - FPL merge in ODB++ Library
- 11582 FIXED - Problem with merge in ODB++ based FPL

## **IPC-2581**

- 11546 NEW - Add Prompt the User on Export of IPC-2581 if the Dimension Units don't match the Database
- 11590 FIXED - Issue loading in Zuken IPC2581 file
- 11473 FIXED - Missing pads after export 2581 and then re-import

## **GERBER**

- 11539 FIXED - Gerber import issue with extremely fine features

## **GENCAD**

11448 FIXED - Gencad Import - outline/centroid issue

## **FIXED MISC**

11641 Convert Drawn Pads problem with asymmetrical shape replacement

11629 D0 errors after running Teardrop command

11427 Overlay mode red background issue

11506 Ghost apertures left behind after layer deletion

11482 Compact Aperture List issue

11501 Fixed loading in v15.GTD files that had duplicate unique id's

## **Version 16.9 Service Release 1 (16.9.44)**

11433 Fixed an issue with Automatic Draw Conversion

11430 ARE - When doing 2 pin ambiguity check - order the candidate parts

11428 Addlayer Parameter of LOADSTACKUP macro should become its own separate command

11420 Add pin #1 marker to createsilkscreen macro

11415 Rotated Pad - Paste issue

## **Version 16.9 (16.9.42)**

Initial Release of VisualCAM 16.9 (64-bit)

