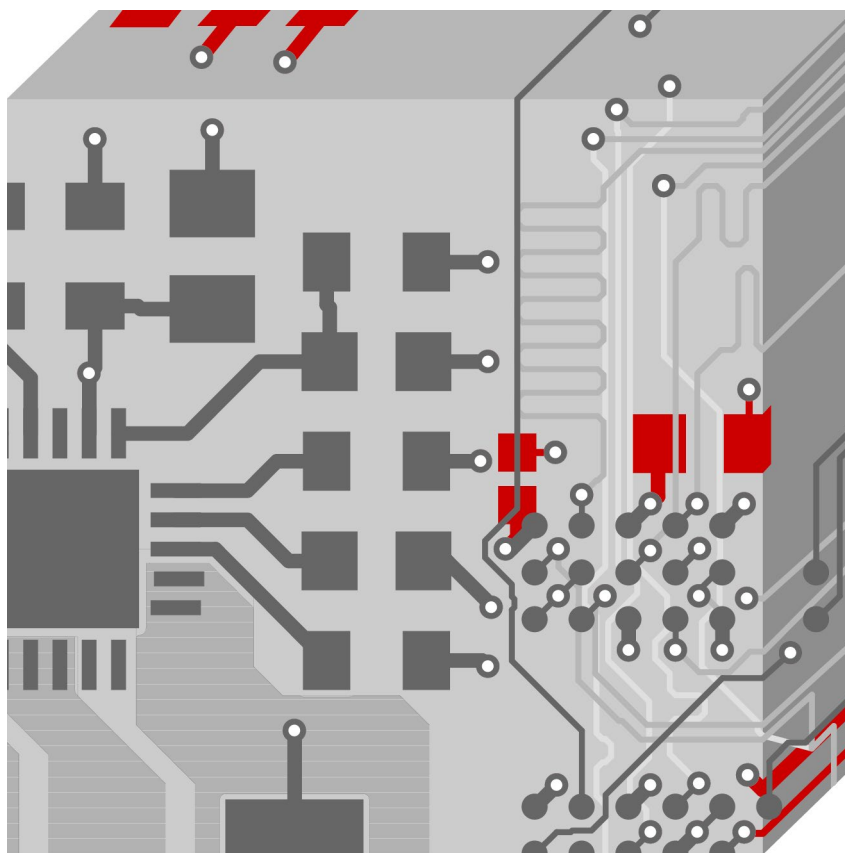


Installation Guide



OrCAD / Allegro
Version 22.1

Table of Contents

1 **System Requirements**3

1.1 Operating System3

1.2 Recommended Hardware3

2 **Installation**4

2.1 Installation Settings5

2.2 Custom Installation.....7

2.3 License Server Setup.....8

2.4 Installing Media9

2.5 Setup Complete 10

1 System Requirements

1.1 Operating System

Windows 11 Professional and Enterprise

Windows 10 (64-bit) Professional and Enterprise, including Dark Theme mode;

Windows Server 2016 (All Service Packs)

Windows Server 2019

Note

Cadence Allegro and OrCAD products do not support Windows 10 Starter and Home Basic. In addition, Windows Server support does not include support for Windows Remote Desktop. Windows RT and Tablets/Phones, including Windows 10 Phone, are not supported.

Note

64-bit Windows require 64-bit Flex software dongle drivers if using dongle-based licensing.

1.2 Recommended Hardware

- Intel® Core™ i7 4.30 GHz or AMD Ryzen™ 7 4.30 GHz with at least 4 cores
Note: Faster processors are preferred.
- 16 GB RAM
50 GB free disk space (SSD drive is recommended)
- 1920 x 1200 display resolution with true color (at least 32bit color)
- A dedicated graphics card supporting OpenGL, minimum 2GB (with additional support for DX11 for 3D Canvas)
- Dual monitors (For physical design)
- Broadband Internet connection for some service
- Ethernet port / card (for network communications and security HostID)
- Three-button Microsoft-compatible mouse

2 Installation

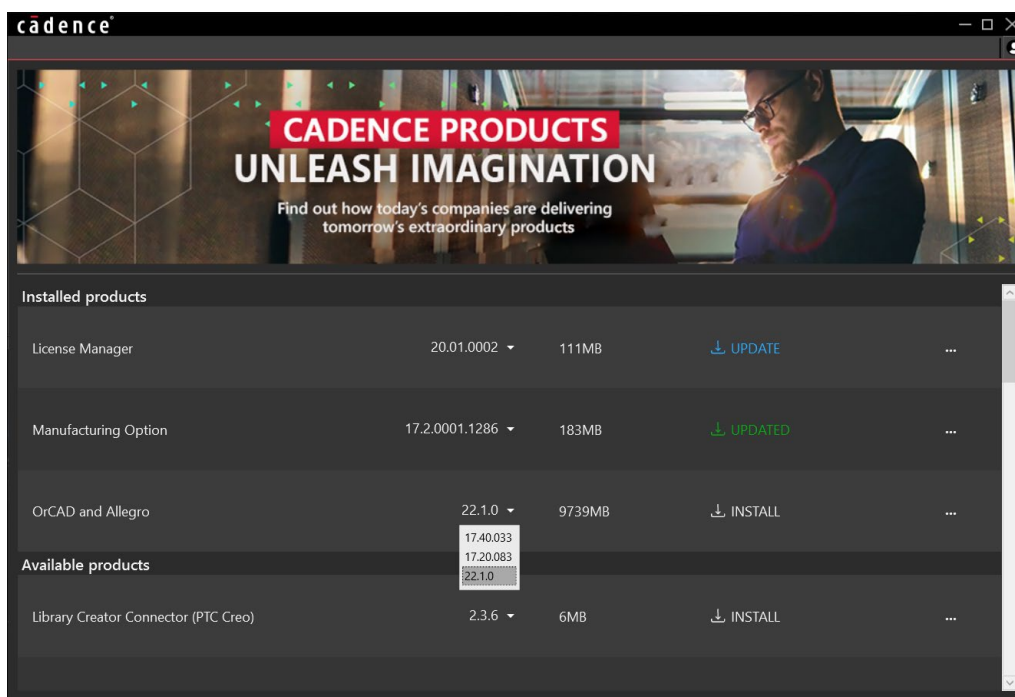
Unzip **Cadence Download Manager.zip** File and start **.exe** file.

While installing Cadence Download Manager, you will be prompted for your Cadence Login.

Please register directly from here, or on <https://support.cadence.com> with your reference key (when you are using OrCAD license) or with your HostID (when you are using Allegro license).

After login you are connected to Cadence Download area, and Download Manager will show actually software version available for installation.

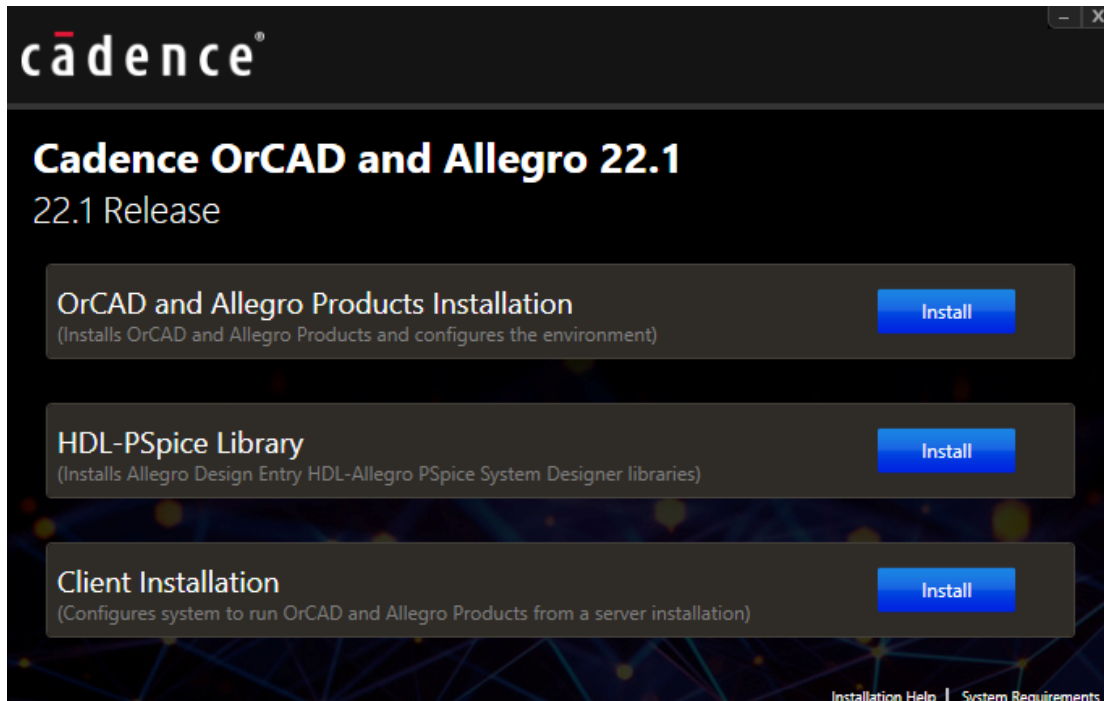
Select **Cadence OrCAD and Allegro 22.1** and click **Install**.



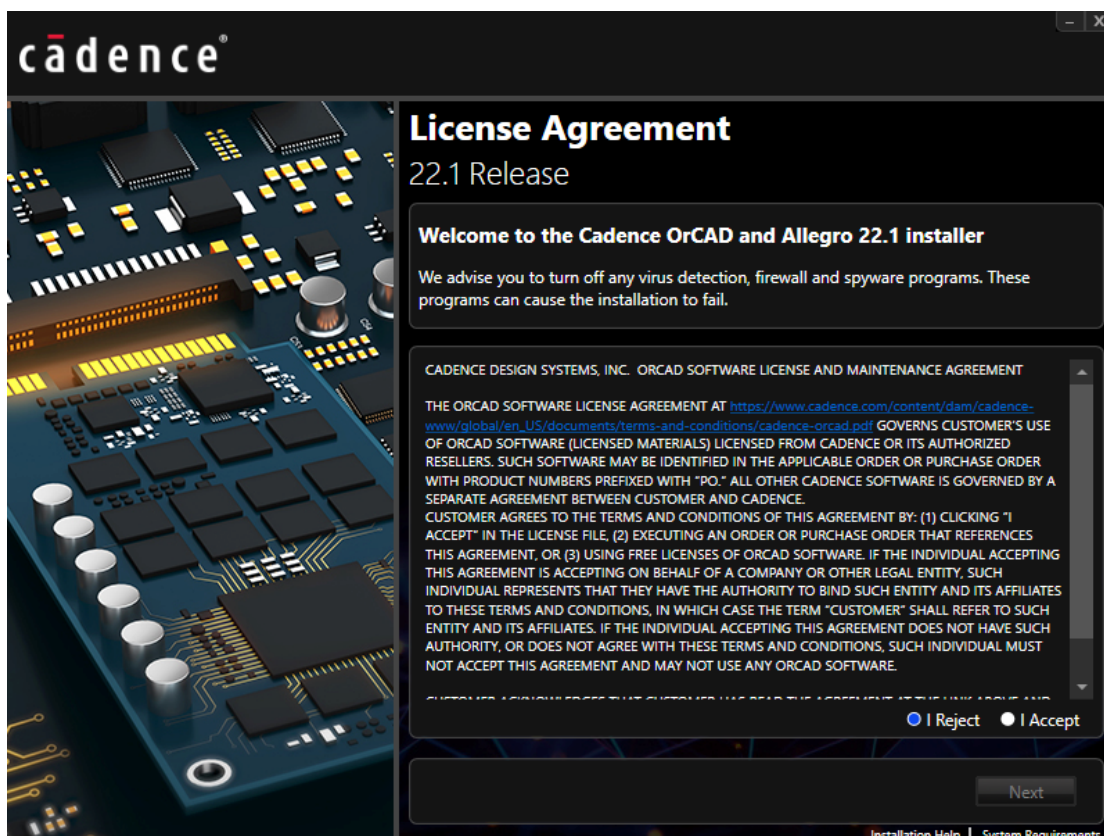
With Download Manager you can always check and start installation for new updates directly from here.

2.1 Installation Settings

Select OrCAD and Allegro Products Installation, click Install.

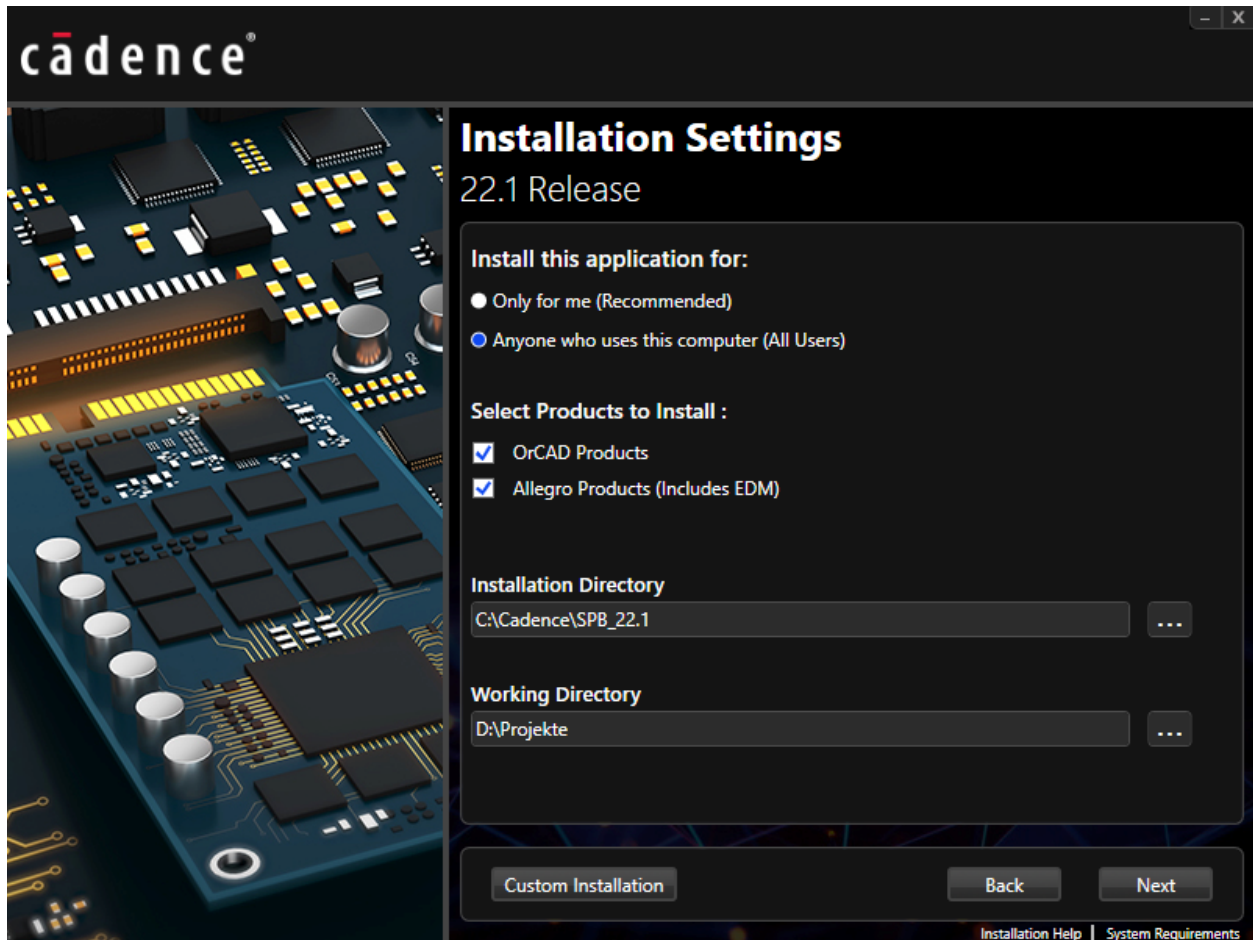


Accept License Agreement.



FlowCAD recommendations:

- Installing for **All Users**.
- Don't use any path names with spaces or special characters.

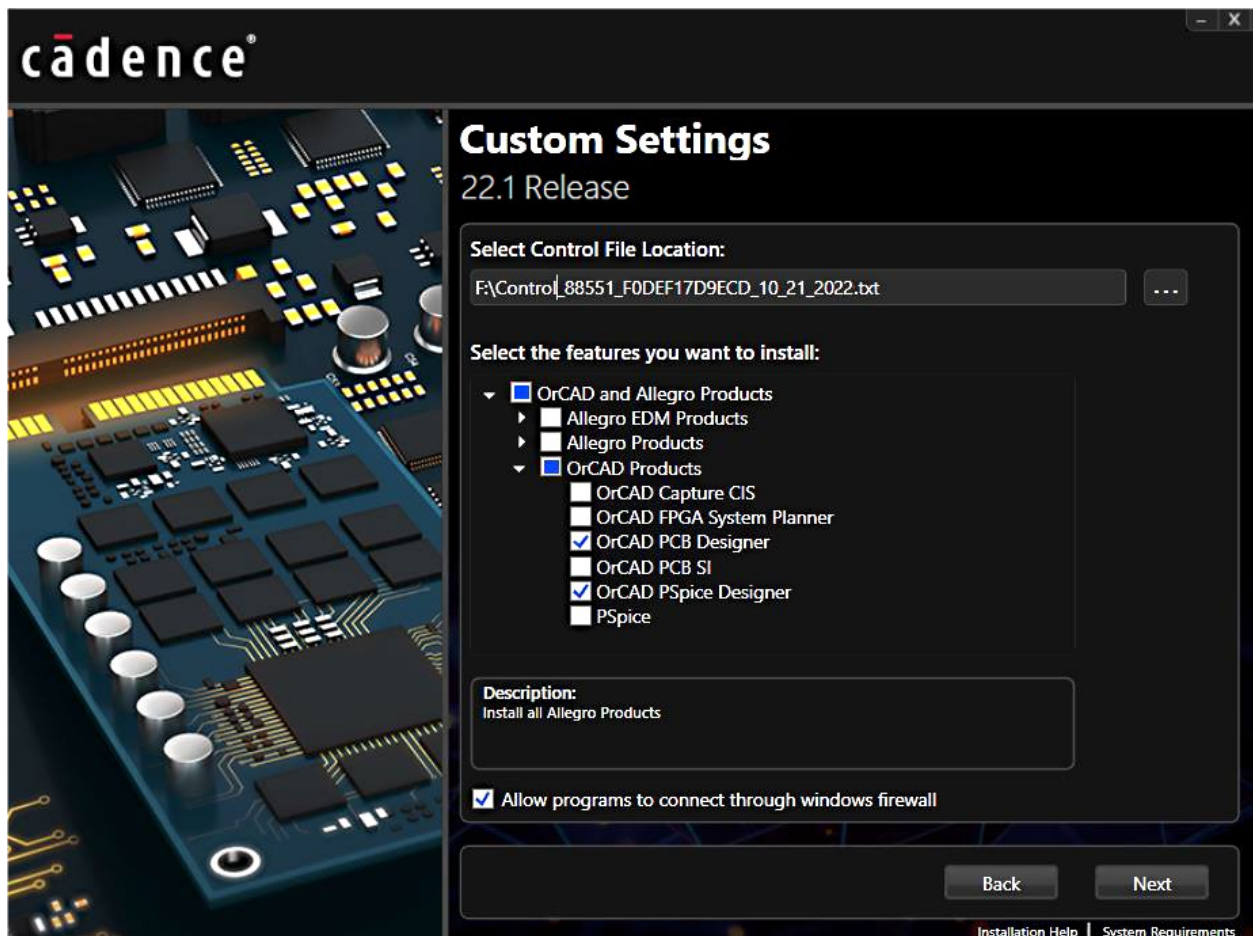


2.2 Custom Installation

Use **Custom Installation** for installing only licensed features, or continue with **Next** for installing complete software package.

With using **Custom Installation** Select Control File shipped by FlowCAD together with License File.

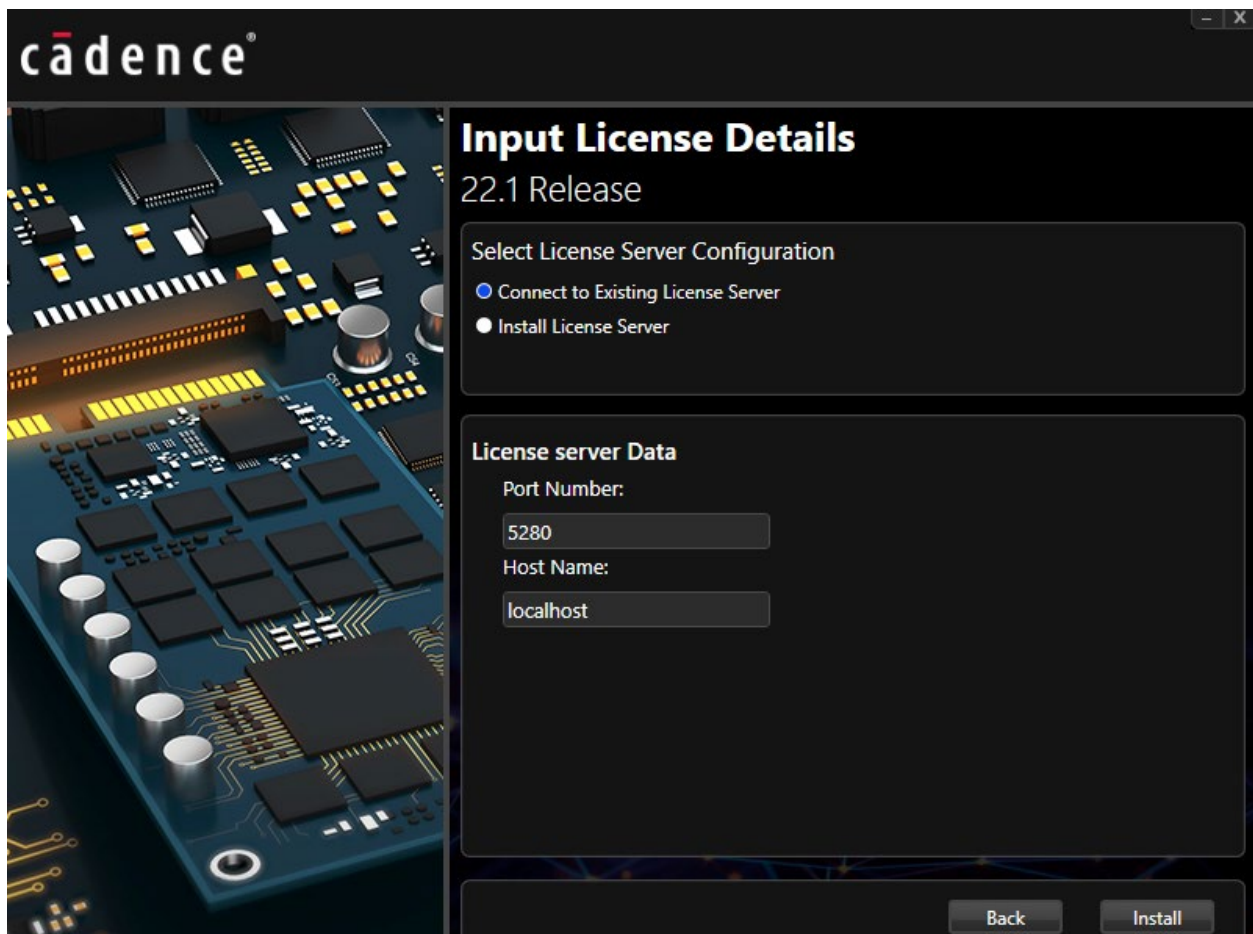
Control File will select licensed features automatically. Continue with **Next**.



2.3 License Server Setup

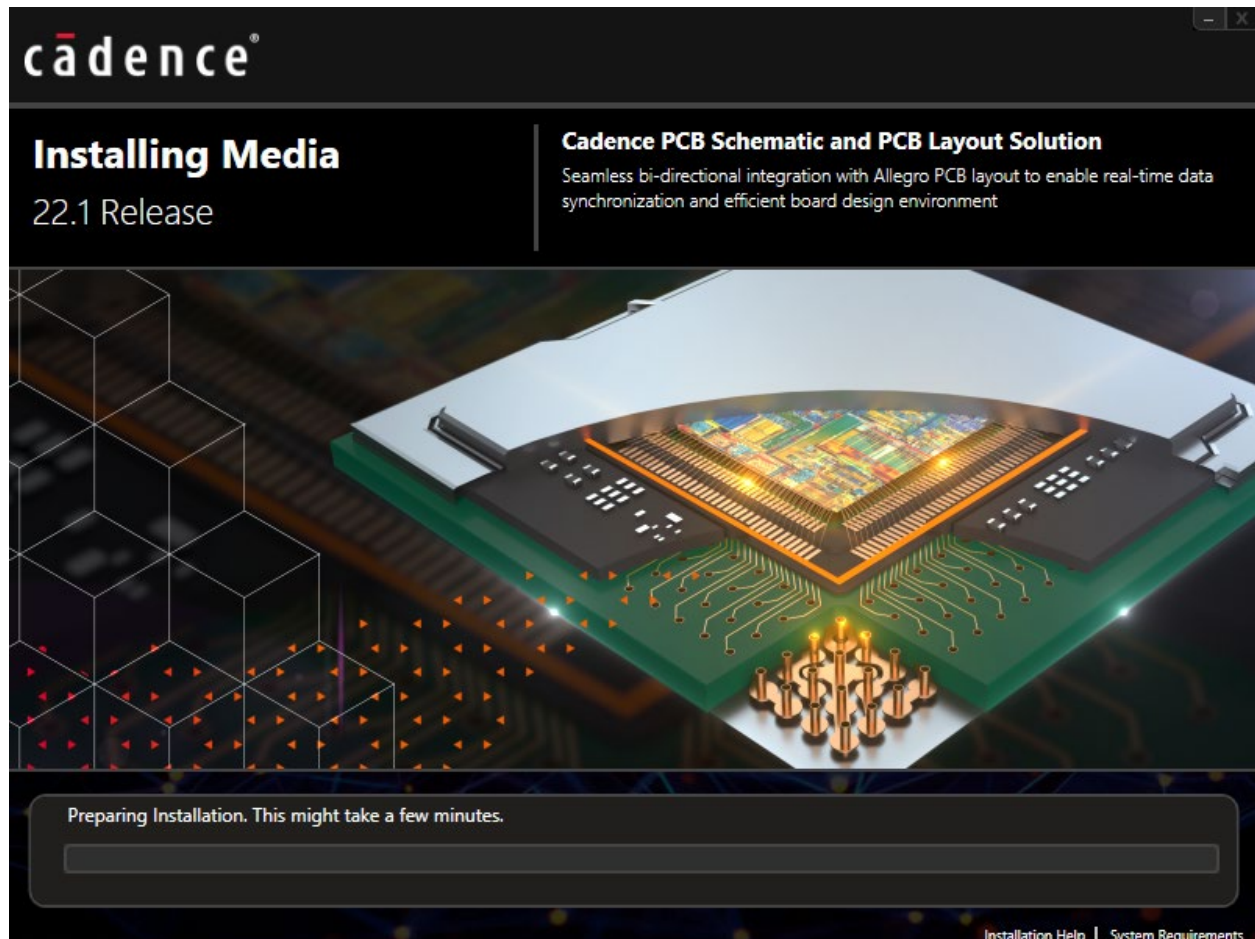
Connect to existing License Server when license manager is already running on your company server. The data of your license server will be read automatically, do not change the entries, just go on with installation.

Install License Server when you want to install license manager locally on same machine as product installation. Select **License File** shipped by FlowCAD. Click **Install** and product installation is starting.



2.4 Installing Media

During the installation, a progress bar shows status of installation.



2.5 Setup Complete

When the installation is finished, close the form with **Finish**.

