

# **FloWare Installation Guide**

Table of Contents

1 Installation Wizard..... 3

2 Licensing..... 6

3 Silent Installation..... 8

4 Module Command Line Options ..... 9

## 1 Installation Wizard

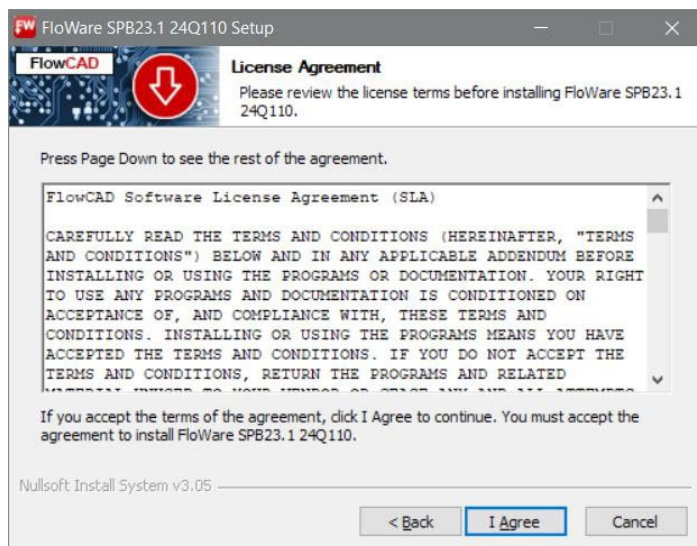
This section describes the necessary steps for installing FloWare products. The installer can be downloaded from FlowCAD website [www.FlowCAD.com/FloWare](http://www.FlowCAD.com/FloWare).

- Unzip the file after download.
- Double-click the installer executable.

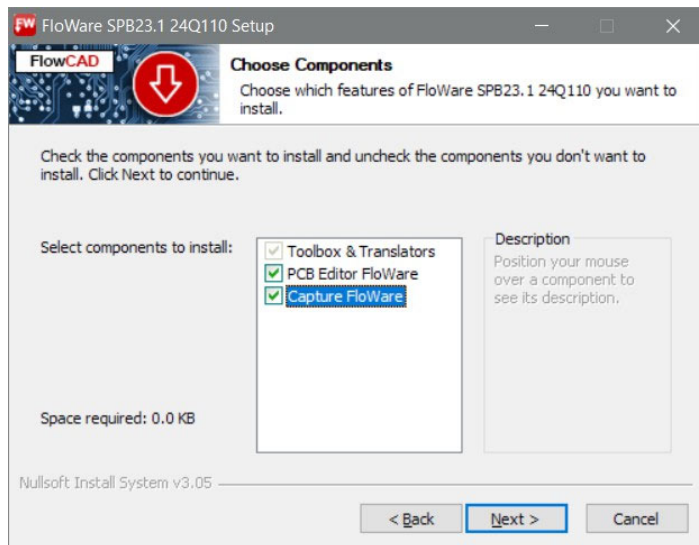
A wizard appears which will guide you through the installation.



- Click **Next**.



- Accept the terms of agreement.



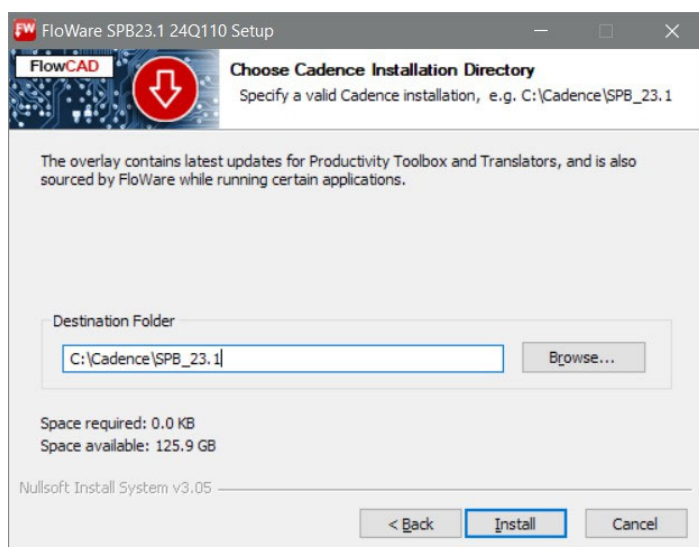
- Specify the components to be installed. Hover over the items to get more information in the **Description** field. You can choose from
  - **Toolbox & Translators**
  - **PCB Editor FloWare**
  - **Capture FloWare**



Note:

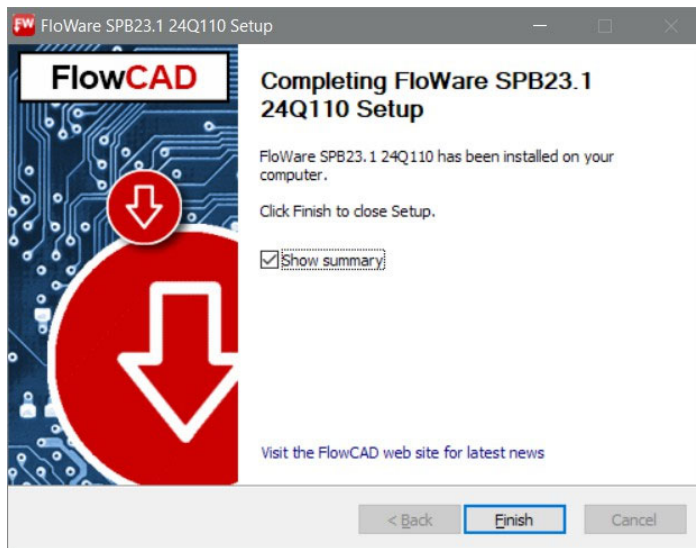
**Toolbox & Translators** and **PCB Editor FloWare** are linked together, if you plan to install **PCB Editor FloWare**, **Toolbox & Translators** are automatically enabled.

- Click **Next**.



- Specify the Cadence SPB installation path.  
The initial value is driven by environment variable `CDSROOT`. However, you can navigate to different path, if several installations are available.

- Click **Install**.



- Once you click **Finish**, a summary report appears.

```

floware_installation_summary.txt - Notepad
File Edit Format View Help
=====
FloWare Installation Summary
=====

Version: FloWare SPB23.1 24Q110

Date:   Wednesday, 14.02.2024, 15:36:14

Installing Toolbox and Translators:
  Destination path C:\Cadence\SPB_23.1
  Replace directory share\pcb\toolbox
  Replace directory share\pcb\translators
  Replace files share\pcb\text\forms\tbx_*
  Replace files share\pcb\text\forms\trl_*
  Replace files share\pcb\etc\context\toolbox*
  Replace files share\pcb\etc\context\translators*

Installing PCB Editor FloWare:
  Destination path C:\Cadence\SPB_23.1
  Copy directory share\pcb\etc\FloWare to share\pcb\etc\FloWare_BAK
  Replace directory share\pcb\etc\FloWare
  Restore file FloWare\floware.lic
  Update file share\pcb\etc\allegro.ilinit
  Checking for legacy FloWare installation in C:\Home\221\pcbenv\allegro.ilinit
  Checking status of license file C:\Cadence\License\floware.lic (specified by env variable FLW_LIC_FILE). OK.

Installing Capture FloWare:
  Destination path C:\Cadence\SPB_23.1
  Replace directory tools\capture\tclscripts\capFloWare
  Replace file tools\capture\tclscripts\capAutoload\floware_startup.tcl
  
```

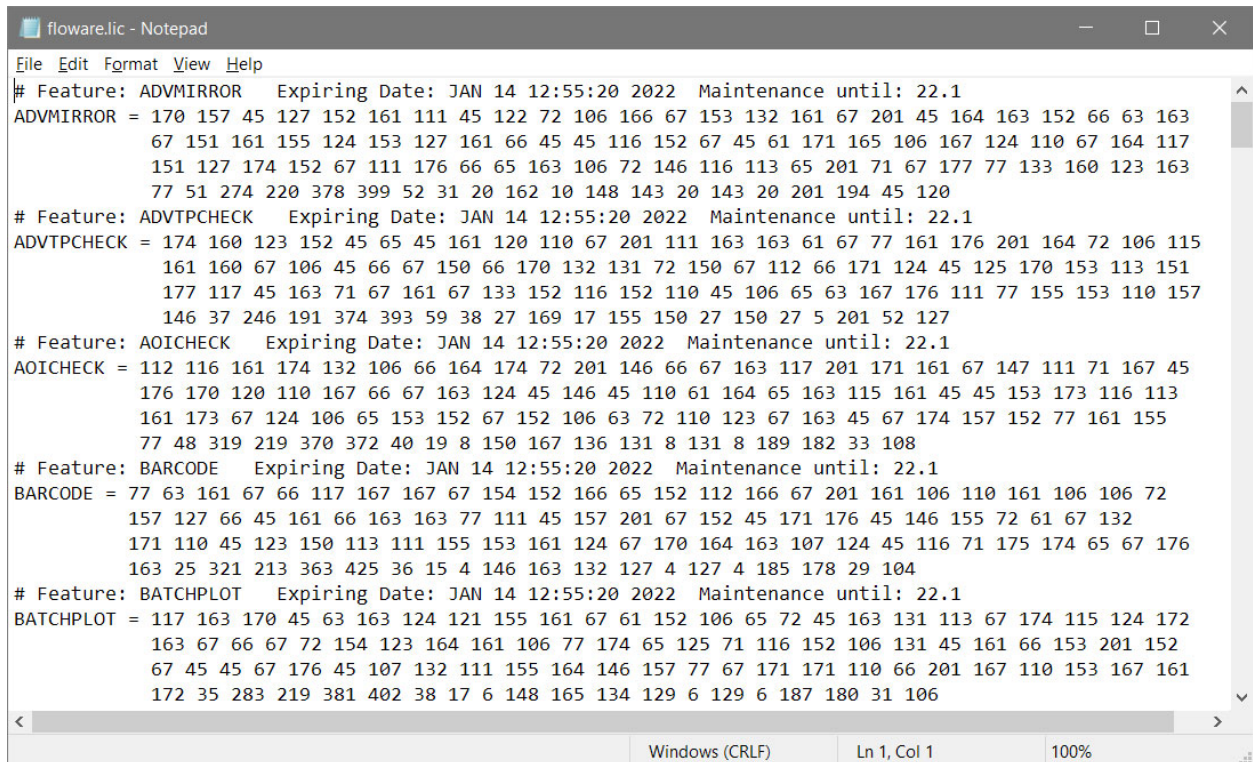


## Note:

The report file will always be written to the SPB installation directory, e.g.  
C:\Cadence\SPB\_23.1\floware\_installation\_summary.txt

## 2 Licensing

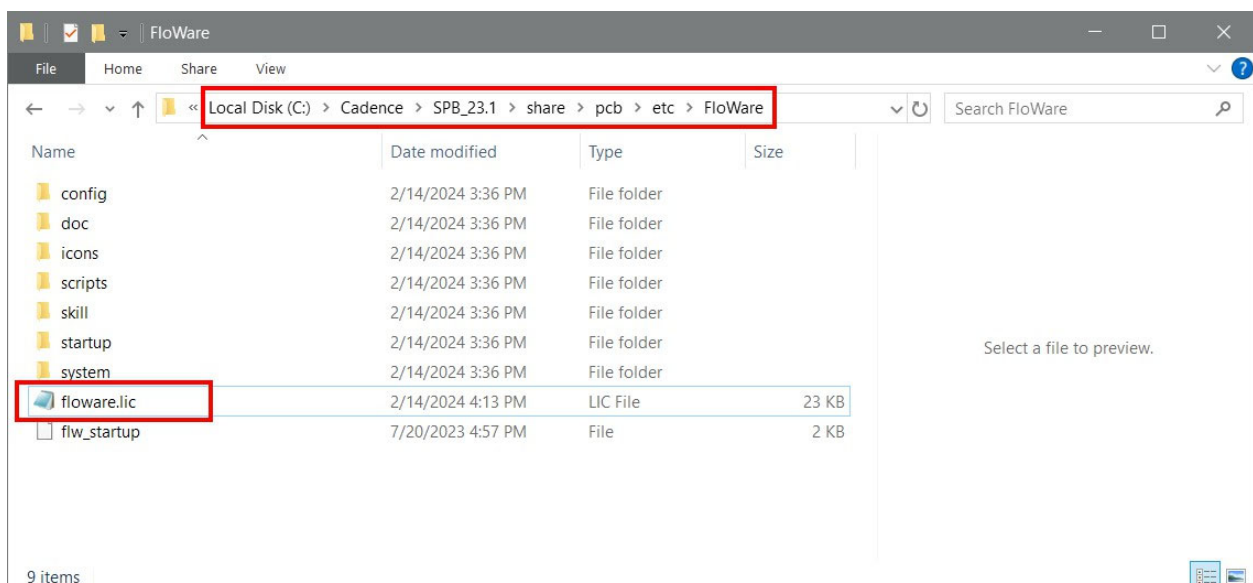
In order to run **FlowWare** a license file `floware.lic` is provided by FlowCAD. It contains the license keys for the individual modules.



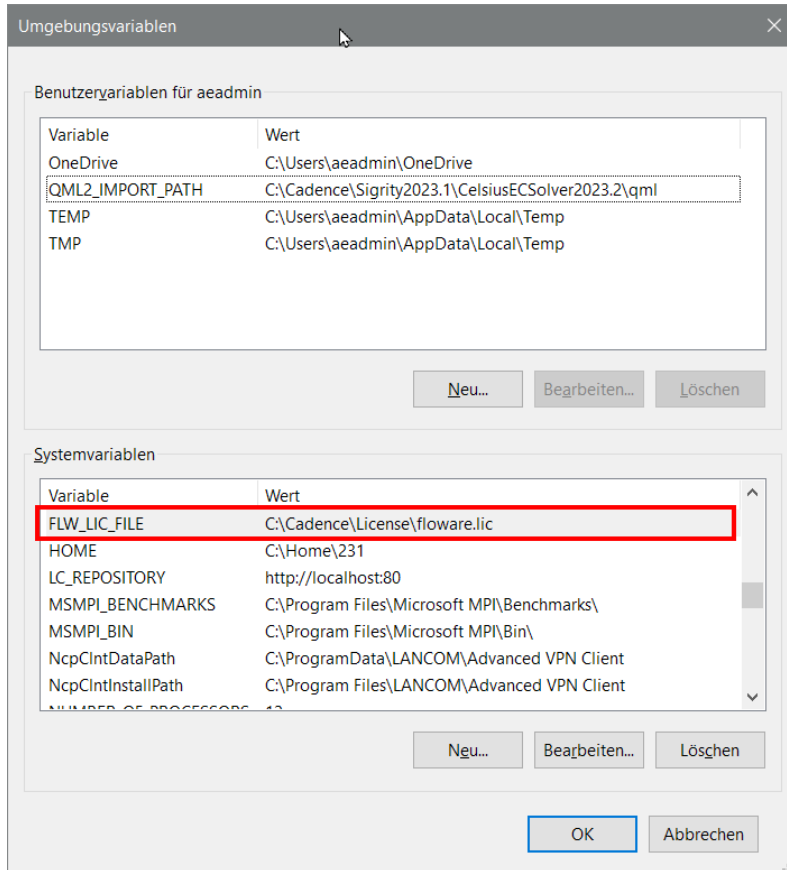
```

file Edit Format View Help
# Feature: ADVMIRROR   Expiring Date: JAN 14 12:55:20 2022   Maintenance until: 22.1
ADVMIRROR = 170 157 45 127 152 161 111 45 122 72 106 166 67 153 132 161 67 201 45 164 163 152 66 63 163
             67 151 161 155 124 153 127 161 66 45 45 116 152 67 45 61 171 165 106 167 124 110 67 164 117
             151 127 174 152 67 111 176 66 65 163 106 72 146 116 113 65 201 71 67 177 77 133 160 123 163
             77 51 274 220 378 399 52 31 20 162 10 148 143 20 143 20 201 194 45 120
# Feature: ADVTPCHECK   Expiring Date: JAN 14 12:55:20 2022   Maintenance until: 22.1
ADVTPCHECK = 174 160 123 152 45 65 45 161 120 110 67 201 111 163 163 61 67 77 161 176 201 164 72 106 115
             161 160 67 106 45 66 67 150 66 170 132 131 72 150 67 112 66 171 124 45 125 170 153 113 151
             177 117 45 163 71 67 161 67 133 152 116 152 110 45 106 65 63 167 176 111 77 155 153 110 157
             146 37 246 191 374 393 59 38 27 169 17 155 150 27 150 27 5 201 52 127
# Feature: AOICHECK     Expiring Date: JAN 14 12:55:20 2022   Maintenance until: 22.1
AOICHECK = 112 116 161 174 132 106 66 164 174 72 201 146 66 67 163 117 201 171 161 67 147 111 71 167 45
            176 170 120 110 167 66 67 163 124 45 146 45 110 61 164 65 163 115 161 45 45 153 173 116 113
            161 173 67 124 106 65 153 152 67 152 106 63 72 110 123 67 163 45 67 174 157 152 77 161 155
            77 48 319 219 370 372 40 19 8 150 167 136 131 8 131 8 189 182 33 108
# Feature: BARCODE      Expiring Date: JAN 14 12:55:20 2022   Maintenance until: 22.1
BARCODE = 77 63 161 67 66 117 167 167 67 154 152 166 65 152 112 166 67 201 161 106 110 161 106 106 72
            157 127 66 45 161 66 163 163 77 111 45 157 201 67 152 45 171 176 45 146 155 72 61 67 132
            171 110 45 123 150 113 111 155 153 161 124 67 170 164 163 107 124 45 116 71 175 174 65 67 176
            163 25 321 213 363 425 36 15 4 146 163 132 127 4 127 4 185 178 29 104
# Feature: BATCHPLOT    Expiring Date: JAN 14 12:55:20 2022   Maintenance until: 22.1
BATCHPLOT = 117 163 170 45 63 163 124 121 155 161 67 61 152 106 65 72 45 163 131 113 67 174 115 124 172
            163 67 66 67 72 154 123 164 161 106 77 174 65 125 71 116 152 106 131 45 161 66 153 201 152
            67 45 45 67 176 45 107 132 111 155 164 146 157 77 67 171 171 110 66 201 167 110 153 167 161
            172 35 283 219 381 402 38 17 6 148 165 134 129 6 129 6 187 180 31 106
  
```

The default location for the license file is the **FlowWare** directory `share\pcb\etc\FloWare` in the installation as shown below.



Alternatively, you may store the license file at a different location in combination with an environment variable `FLW_LIC_FILE` pointing to that location including the name of the file.



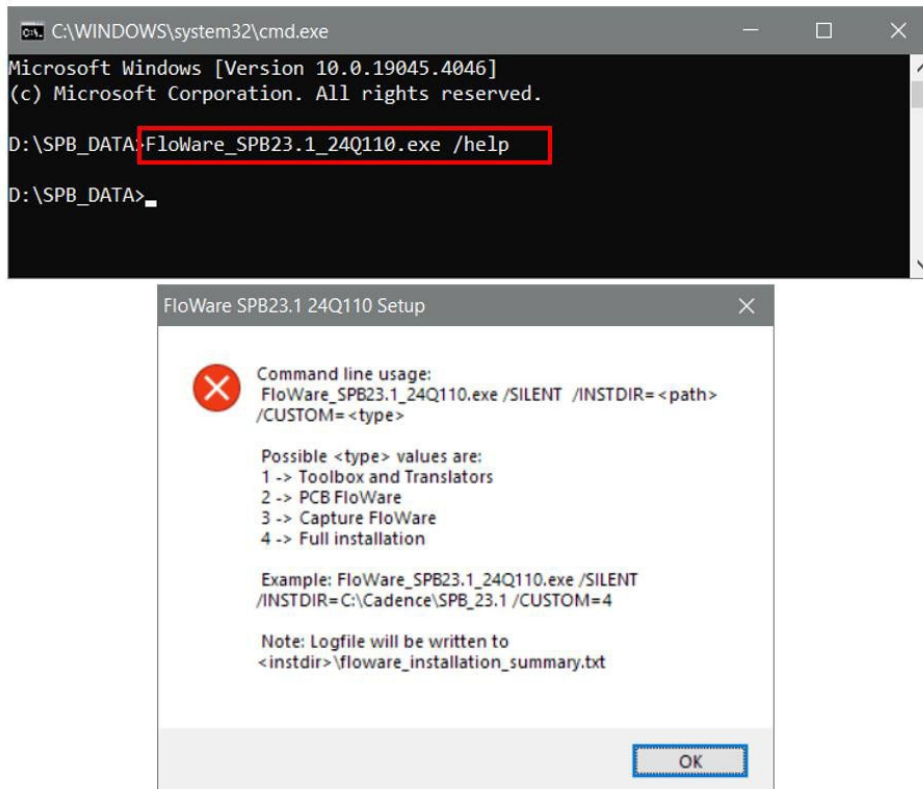
**Note:**

If set the environment variable takes precedence over the default location.



## 3 Silent Installation

**FloWare** can also be installed from command line. Call the exe with `/help` or `/?` argument to obtain information about available arguments.



You need to specify installation directory and the components to be installed, for example:  
`<app_name>.exe /SILENT /INSTDIR=C:\Cadence\SPB_23.1 /CUSTOM=4`

A batch file `silent.bat` is also provided to further automate the installation process.

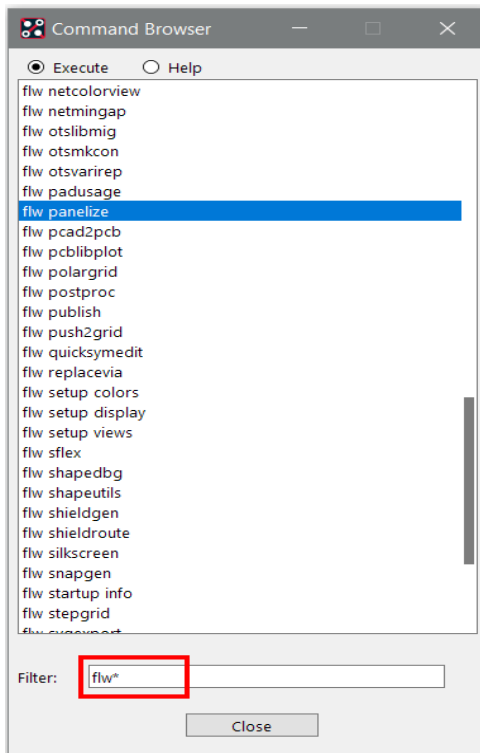




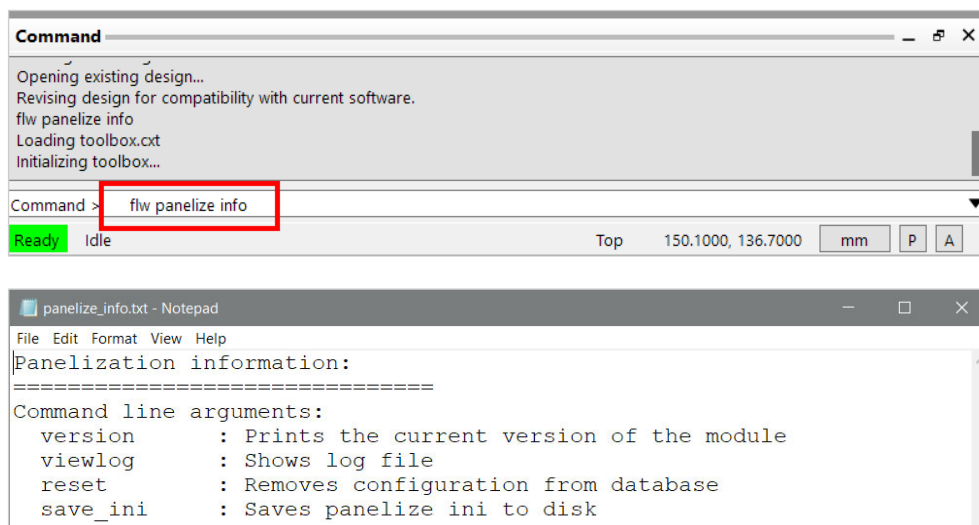
## 4 Module Command Line Options

Some of the **FloWare** modules also offer command line option for various purposes. The command line options are displayed when the module command is called with the `info` argument.

The module command can be obtained using **Tools – Utilities – Keyboard Commands** by filtering with `flw*`.



Entering the command `flw panelize info` will display a report.



For example, the command `flw panelize reset` will remove all configuration data from the current layout database related to **Panelization** toolkit.