

Title: Transparency and Shadow mode settings  
by mouse wheel

Product: OrCAD / Allegro PCB Editor 16.3 and  
above

Summary: How-To: Changing transparency/shadow  
mode settings using the mouse wheel.

Author/Date: Rolf Nick / 27.04.2011

---

## Table of Contents

1	Introduction .....	2
2	Load skill code .....	2
3	Add shortcut definitions to your env-File .....	3
4	Launch PCB Editor .....	3

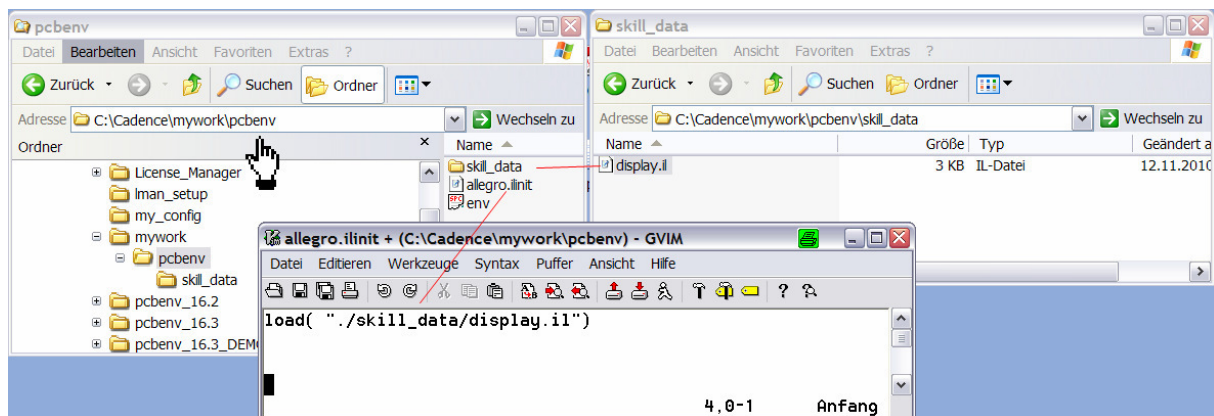
# 1 Introduction

This Application Note describes how the customer can configure the mouse wheel in order to change transparency and shadow mode settings dynamically in PCB Editor. Besides the Application note the folder **skill\_data** need to be shared as well.

## 2 Load skill code

Unzip data anywhere. Drag and drop directory **skill\_data** to your local **pcbenv**- directory  
Create a file or update file **allegro.ilinit** in our **pcbenv** directory by adding the following statement:

```
load("./skill_data/display.il")
```



### 3 Add shortcut definitions to your env-File

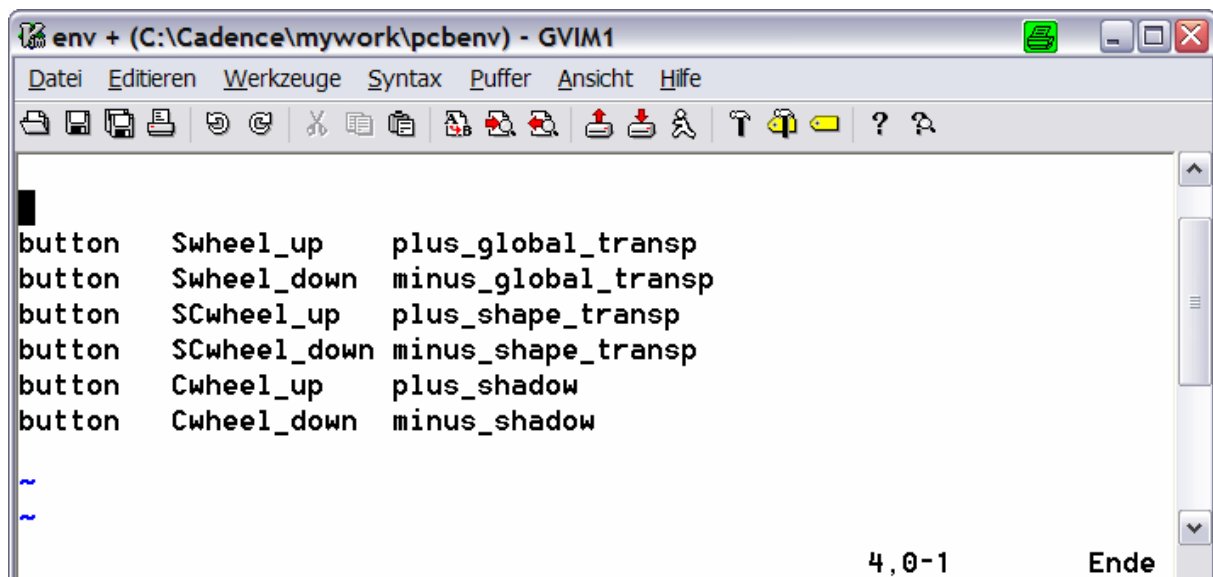
Add the following lines to your env-File

```
button Swheel_up plus_global_transp
button Swheel_down minus_global_transp
button SCwheel_up plus_shape_transp
button SCwheel_down minus_shape_transp
button Cwheel_up plus_shadow
button Cwheel_down minus_shadow
```

Swheel\_up/down stands for Shift + Mouse wheel

SCwheel\_up/down stands for Shift + Control + Mouse wheel

Cwheel\_up/down stands for Control + Mouse wheel



```
env + (C:\Cadence\mywork\pcbenv) - GVIM1
Datei Editieren Werkzeuge Syntax Puffer Ansicht Hilfe
button Swheel_up plus_global_transp
button Swheel_down minus_global_transp
button SCwheel_up plus_shape_transp
button SCwheel_down minus_shape_transp
button Cwheel_up plus_shadow
button Cwheel_down minus_shadow
~
~
4,0-1 Ende
```

### 4 Launch PCB Editor

Use Shift + Wheelup/down to change the global transparency settings

Use Shift + Control Wheelup/down to change the shape transparency settings

Use Control + Wheelup/down to change the shadow mode settings