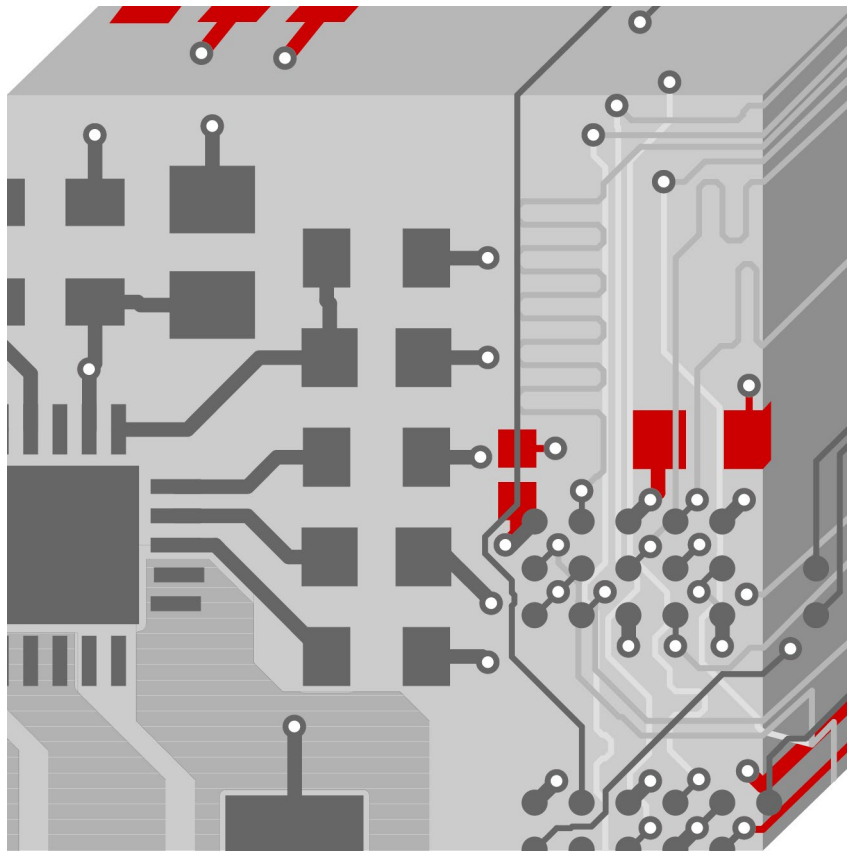


## Net Group vs Net Class



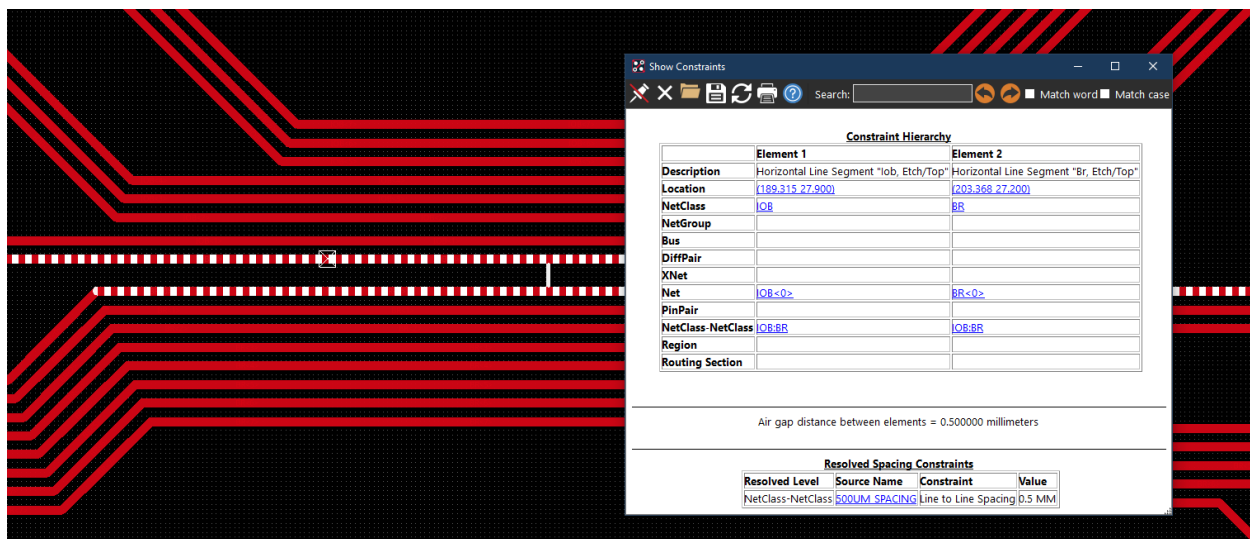
## What is the Difference Between a Net Group and a Net Class in Constraint Manager?

### Problem

Constraint Manager allows the ability to create a Net Group (NGrp) and a Net Class (NCIs). What is the difference between these two sets of objects? Under what circumstances would one or the other be used?

### Solution

A **Net Group** is a collection of physical objects that supports defining connectivity in Allegro Design Entry HDL (DE-HDL), routing in Allegro PCB Editor, and adding constraints in the frontend and / or backend. A Net Group is used to simplify defining connectivity in DE-HDL and bundling and auto interactive routing of nets in Allegro. Members of a Net Group do not have to share the same constraint values.



A **Net Class** is a collection of net objects used to define intra- and inter-class restrictions. A Net Class constraint object lets you group the net objects that share common characteristics and have a similar constraint requirement.

In summary, a Net Group is a collection of nets grouped together to facilitate performing an operation on the members, but they do not need to share constraints. A Net Class is only used to define constraints for the Net Class members.

### Note

A Net Group can be a member of a Net Class. Cross references are generated for individual nets only. These are not generated for Net Group bundles as they don't have any specific net characteristics.