

**Title:** capture.ini

**Product:** OrCAD Capture with and without CIS  
Option and Allegro DE CIS

**Summary:** Description of the configuration file capture.ini.

**Author/Date:** Beate Wilke / 05.04.2011

## Table of Contents

1.1.1 .....	1
2 Introduction .....	4
3 Capture.ini - Location .....	5
4 Overview .....	6
5 Description .....	9
5.1 Application .....	9
5.1.1 Syntax .....	9
5.1.2 Description .....	9
5.2 Footprint Viewer Type .....	9
5.2.1 Syntax .....	9
5.2.2 Description .....	9
5.3 Allegro Footprints .....	9
5.3.1 Syntax .....	9
5.3.2 Description .....	9
5.4 Part Library Directories .....	10
5.4.1 Syntax .....	10
5.4.2 Description .....	10
5.5 Part Management .....	10
5.5.1 Syntax .....	10
5.5.2 Description .....	10
5.6 CIS Browser Directories .....	10
5.6.1 Syntax .....	10
5.6.2 Description .....	10
5.7 Part Selector Configured Libraries .....	11
5.7.1 Syntax .....	11
5.7.2 Description .....	11

---

5.8	Symbol Selector Configured Libraries .....	11
5.8.1	Syntax .....	11
5.8.2	Description .....	11
5.9	Visibility Frame.....	11
5.9.1	Syntax .....	11
5.9.2	Description .....	11
5.10	Schematic Part Frame .....	12
5.10.1	Syntax .....	12
5.10.2	Description .....	12
5.11	FootPrint Frame .....	12
5.11.1	Syntax .....	12
5.11.2	Description .....	12
5.12	Relational Table Frame.....	12
5.12.1	Syntax .....	12
5.12.2	Description .....	12
5.13	Explore Frame .....	12
5.13.1	Syntax .....	12
5.13.2	Description .....	12
5.14	Part Manager .....	13
5.14.1	Syntax .....	13
5.14.2	Description .....	13
5.15	Design Template.....	14
5.15.1	Syntax .....	14
5.15.2	Description .....	15
5.16	Preferences .....	15
5.16.1	Syntax .....	15
5.16.2	Description .....	16
5.17	Text Editor .....	16
5.17.1	Syntax .....	16
5.17.2	Description .....	16
5.18	ERC Matrix .....	17
5.18.1	Syntax .....	17
5.18.2	Description .....	17
5.19	Default Colors .....	18
5.19.1	Syntax .....	18
5.19.2	Description .....	18
5.20	BoM .....	19
5.20.1	Syntax .....	19
5.20.2	Description .....	19
5.20.3	Syntax .....	19
5.21	Crystal Reports BOM .....	21
5.21.1	Syntax .....	21
5.21.2	Description .....	21
5.22	Variant .....	21
5.22.1	Syntax .....	21
5.22.2	Description .....	21
5.23	Variant.LST .....	22
5.23.1	Syntax .....	22
5.23.2	Description .....	22
5.24	Intersheet References.....	22
5.24.1	Syntax .....	22
5.24.2	Description .....	23
5.25	Spreadsheet .....	23
5.25.1	Syntax .....	23

---

5.25.2	Description .....	23
5.26	Project Wizard.....	23
5.26.1	Syntax .....	23
5.26.2	Description .....	23
5.27	Place Part Search.....	23
5.27.1	Syntax .....	23
5.27.2	Description .....	23
5.28	__MRURegList.....	24
5.28.1	Syntax .....	24
5.28.2	Description .....	24
5.29	Translators.....	24
5.29.1	Syntax .....	24
5.29.2	Description .....	24
5.30	Print Settings .....	24
5.30.1	Syntax .....	24
5.30.2	Description .....	24
5.31	Recent File List.....	25
5.31.1	Syntax .....	25
5.31.2	Description .....	25
5.32	CIS Database Tables .....	25
5.32.1	Syntax .....	25
5.32.2	Description .....	26

---

# 1 Introduction

Capture has a central configuration file for every user. When you start Capture first it reads nearly all settings out of the installation files and creates a default capture.ini. If the user changes any setting, Capture writes this into the user capture.ini. Only your personal database paths are missing and must be filled into capture.ini by the user or administrator.

It's useful to define a master capture.ini to start up the system and provide new users. This master capture.ini should contain all library paths and company specific settings.

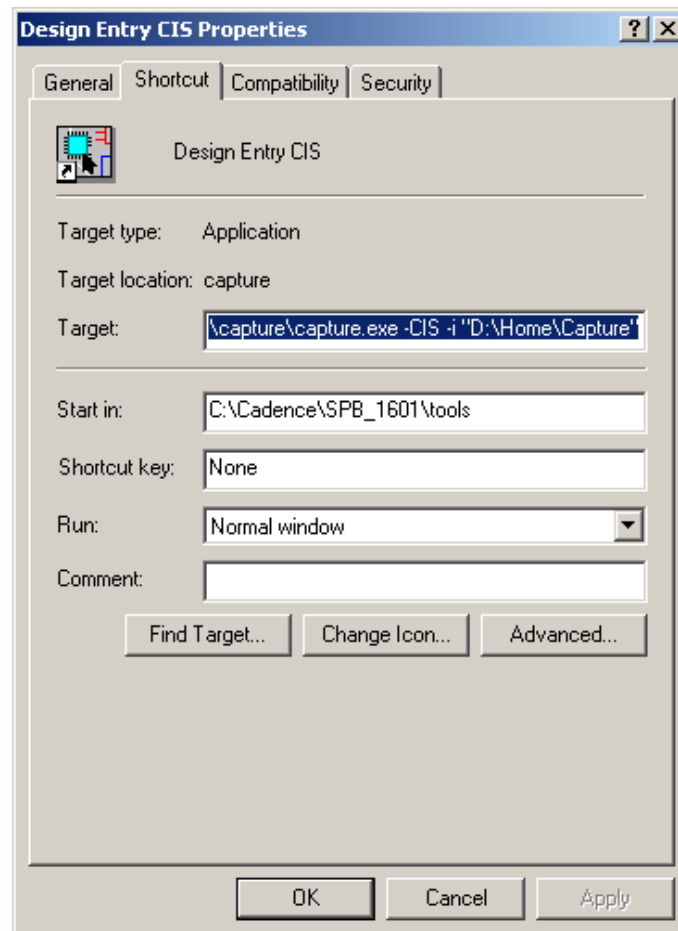
Capture damages his capture.ini sometimes. Then delete the user capture.ini and restart the program with master capture.ini

We tried to explain the main commands in capture.ini to help you to define your local company and user settings. Capture will add additional information to report queries and opened database tables. You can delete this information every time.

---

## 2 Capture.ini - Location

For XP select Start -> Programs -> Cadence SPB 16.01 and right click on Design Entry CIS. Open the properties menu.



In the field Target you find these settings:

e.g.: C:\Cadence\SPB\_1601\tools\capture\capture.exe -CIS -i "D:\Home\Capture"

C:\Cadence\SPB\_1601\tools\capture\capture.exe is the path to the Capture.exe.

-CIS starts Capture with CIS Option

-i "D:\Home\Capture" is the path to the Capture.ini

Select OK to close the window.

By default this path is <CDSROOT>/tools/capture. We changed it to a folder where the user has full privileges.

Note: If the user do not has full system privileges to the install area of the Cadence tool it's important to change this path to a folder with full privileges. The Allegro HOME folder would be perfect.

### 3 Overview

	<b>Command Name</b>	<b>Useful for master capture.ini</b>	<b>Automatically generated by Capture</b>
1	Application	no	Yes
2	Footprint Viewer Type	yes	No
3	Allegro Footprints	Yes	No
4	Part Library Directories	Yes	No
5	Part Management	Yes	No
6	CIS Browse Directories	Yes	No
7	Part Selector Configured Libraries	No	Yes
8	Symbol Selector Configured Libraries	No	Yes

8	Visibility Frame	No	Default settings from installation
10	Schematic Part Frame	No	Default settings from installation
11	FootPrint Frame	No	Default settings from installation
12	Relational Table Frame	No	Default settings from installation
13	Explore Frame	No	Default settings from installation
14	Part Manager	Yes	Default settings from installation
15	Design Template	Yes	Default settings from installation
16	Preferences	Yes	Default settings from installation
17	Text Editor	Yes	Default settings from installation
18	ERC Matrix	Yes	Default settings from installation
19	Default Colors	Yes	Default settings from installation
20	BoM	Yes	Default settings from installation
21	Crystal Reports BOM	Only if you want to use Chrystal Report	Default settings from installation
22	Variant	Yes	Default settings from installation

23	Intersheet References	Yes	Default settings from installation
24	Variant.LST	Yes	Default settings from installation
25	Spreadsheet	Yes	Default settings from installation
26	Project Wizard	No	Default settings from installation
27	Place Part Search	No	Default settings from installation
28	__MRURegList	No	yes
29	Translators	No	Default settings from installation
30	Print Settings	Depends on your Installation	Default settings from installation
31	Recent File List	No	yes
32	CIS Database Tables	no	yes

---

## 4 Description

### 4.1 Application

#### 4.1.1 Syntax

[Application]

Version=16.3.0 b003.b003

#### 4.1.2 Description

It shows the installed software and Hotfix version.

### 4.2 Footprint Viewer Type

#### 4.2.1 Syntax

[Footprint Viewer Type]

Type=Allegro

#### 4.2.2 Description

This setting should always be Allegro. It describes the footprint viewer which CIS Explorer uses for 2D footprint preview.

### 4.3 Allegro Footprints

#### 4.3.1 Syntax

[Allegro Footprints]

Dir0=E:\FlowCAD\_Library\Allegro\_Footprints\_163\Footprints\all

Dir1=E:\FlowCAD\_Library\Allegro\_Footprints\_163\Pads

Dir2=E:\FlowCAD\_Library\Allegro\_Footprints\_163\Pads\padsym

#### 4.3.2 Description

It contains the path definitions to all footprint and pad folders.

---

## 4.4 Part Library Directories

### 4.4.1 Syntax

[Part Library Directories]

Dir0=E:\FlowCAD\_Library\CIS-Symbols\_163

Dir1=E:\Sales\customer\DB

### 4.4.2 Description

It contains the path definitions to all Capture OLB files.

## 4.5 Part Management

### 4.5.1 Syntax

[Part Management]

Configuration File=E:\FLOWCAD\_LIBRARY\FILES\FC\_LIB\_163.DBC

DemoConfiguration File=D:\CADENCE\SAMPLES\BENCHACC.DBC]Width=536BarID=219

### 4.5.2 Description

It contains the path to the current DBC file. The DBC file contains the configuration and link to the property database. Capture uses the DemoConfiguration if Capture is started in demo mode. In demo mode the database must be less than 9 components.

## 4.6 CIS Browser Directories

### 4.6.1 Syntax

[CIS Browse Directories]

Dir0=C:\OrCAD\OrCAD\_16.3\tools\Capture\Library

Dir1= D:\Training\CIS\Starter\_Lib \Files

### 4.6.2 Description

If you use browsable Properties in CIS to link to external documents, you can set the path to these documents here.

---

## 4.7 Part Selector Configured Libraries

### 4.7.1 Syntax

[Part Selector Configured Libraries]

Number of Configured Libraries=3

Library0=D:\CADENCE\SPB\_16.3\TOOLS\CAPTURE\LIBRARY\FILTER.OLB

Library1=E:\HOTLINE\6815\6815.OLB

Library2=E:\FLOWCAD\_LIBRARY\CIS-SYMBOLS\_163\FC\_VIRTEX5.OLB

### 4.7.2 Description

It reports all OLBs which the CIS Explorer used. This list is a report and can't be configured, only deleted.

## 4.8 Symbol Selector Configured Libraries

### 4.8.1 Syntax

[Symbol Selector Configured Libraries]

Number of Configured Libraries=4

Library0=D:\Cadence\SPB\_16.3\tools\Capture\LIBRARY\CAPSYM.OLB

Library1=E:\FLOWCAD\_LIBRARY\CIS-SYMBOLS\_163\FC\_STANDARD.OLB

Library2=D:\Cadence\SPB\_16.3\tools\capture\library\pspice\source.olb

### 4.8.2 Description

It reports all OLBs which place part or place symbol (power, titleblock, offpage connector, and port) used. This list is a report. You can predefine some OLB which contains your power, titleblock, offpage connector and port symbols.

## 4.9 Visibility Frame

### 4.9.1 Syntax

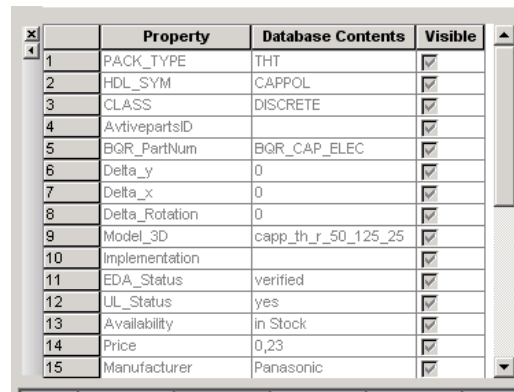
[Visibility Frame]

Visible=1

Visible In ICA Mode=1

### 4.9.2 Description

It shows if the visibility frame is visible in CIS Explorer.



	Property	Database Contents	Visible
1	PACK_TYPE	THT	<input checked="" type="checkbox"/>
2	HDL_SYM	CAPPOL	<input checked="" type="checkbox"/>
3	CLASS	DISCRETE	<input checked="" type="checkbox"/>
4	AvtivepartsID		<input checked="" type="checkbox"/>
5	BGR_PartNum	BGR_CAP_ELEC	<input checked="" type="checkbox"/>
6	Delta_y	0	<input checked="" type="checkbox"/>
7	Delta_x	0	<input checked="" type="checkbox"/>
8	Delta_Rotation	0	<input checked="" type="checkbox"/>
9	Model_3D	capp_th_r_50_125_25	<input checked="" type="checkbox"/>
10	Implementation		<input checked="" type="checkbox"/>
11	EDA_Status	verified	<input checked="" type="checkbox"/>
12	UL_Status	yes	<input checked="" type="checkbox"/>
13	Availability	in Stock	<input checked="" type="checkbox"/>
14	Price	0,23	<input checked="" type="checkbox"/>
15	Manufacturer	Panasonic	<input checked="" type="checkbox"/>

---

## 4.10 Schematic Part Frame

### 4.10.1 Syntax

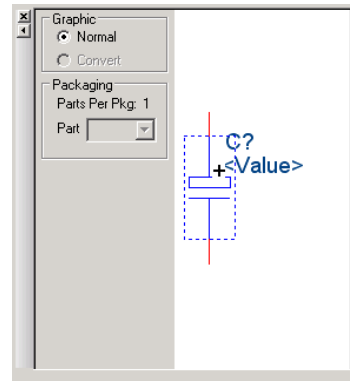
[Schematic Part Frame]

Visible=1

Visible In ICA Mode=1

### 4.10.2 Description

It shows if the schematic part frame is visible in CIS Explorer.



## 4.11 FootPrint Frame

### 4.11.1 Syntax

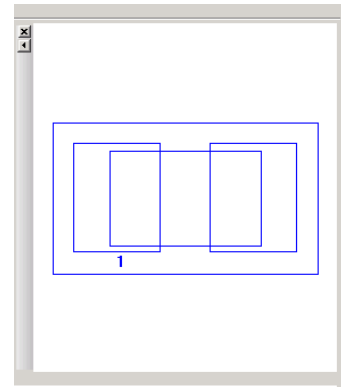
[FootPrint Frame]

Visible=1

Visible In ICA Mode=1

### 4.11.2 Description

It shows if the footprint frame is visible in CIS Explorer.



## 4.12 Relational Table Frame

### 4.12.1 Syntax

[Relational Table Frame]

Visible=1

Visible In ICA Mode=1

### 4.12.2 Description

It shows if the relational table frame is visible in CIS Explorer.

## 4.13 Explore Frame

### 4.13.1 Syntax

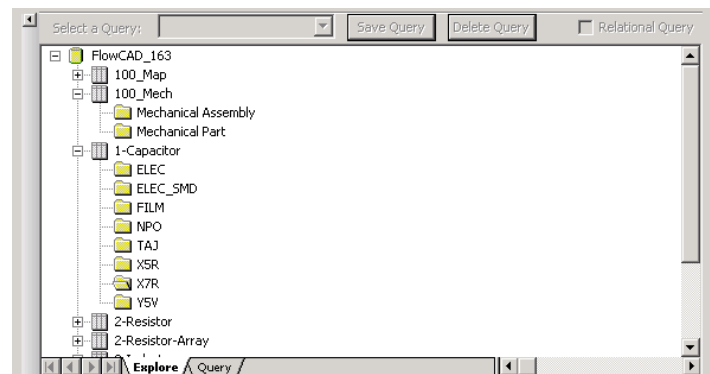
[Explore Frame]

Wdw Pos=32 52 1802 823

Maximized=1

### 4.13.2 Description

It describes position and size of Explorer window.



## 4.14 Part Manager

### 4.14.1 Syntax

[Part Manager]

#=120

Schematic Page=120

Part Reference=120

Value=120

Part Number=120

Part Status=154

Source Library=120

Source Package=120

Database Table=120

Wdw Pos=-241 58 1051 342

Maximized=2

Variant Mark Column=120

Variants in PowSup=240

### 4.14.2 Description

It contains the settings for the part manager. Which properties are displayed and which size the columns have.

#	Schematic Page	Part Reference	Value	Part Number	Part Status	Source Library	Source Package
1	SCHEMATIC1 : PAGE1	R3	1.05	FC-RES-0504	Approved: De...	E:\FLOWCAD_LIB...	RES_V
2	SCHEMATIC1 : PAGE1	R4	1.05	FC-RES-0504	Approved: De...	E:\FLOWCAD_LIB...	RES_V
3	SCHEMATIC1 : PAGE1	R5	1.05	FC-RES-0504	Approved: De...	E:\FLOWCAD_LIB...	RES_V
4	SCHEMATIC1 : PAGE1	R12	1.05	FC-RES-0504	Approved: De...	E:\FLOWCAD_LIB...	RES_V
5	SCHEMATIC1 : PAGE1	R11	1.05	FC-RES-0504	Approved: De...	E:\FLOWCAD_LIB...	RES_V

---

## 4.15 Design Template

### 4.15.1 Syntax

[Design Template]

Border Printed=True

Border Displayed=True

Organization Address3=

Organization Address2=

Organization Address1=

Organization Name=

Title=

Revision=

Pin Number.....=[-9, 4, 0, 0, 400, 0, 0, 0, 0, 3, 2, 1, 34, Arial]

Part Reference.....=[-9, 4, 0, 0, 400, 0, 0, 0, 0, 3, 2, 1, 34, Arial]

ANSI Grid Refs=True

Title Block Part Name=TitleBlock4

Title Block Library Name=E:\FlowCAD\_Library\CIS-Symbols\_163\FC\_STANDARD.OLB

Property.....=[-9, 4, 0, 0, 400, 0, 0, 0, 0, 3, 2, 1, 34, Arial]

Power Text.....=[-9, 4, 0, 0, 400, 0, 0, 0, 0, 3, 2, 1, 34, Arial]

Part Value.....=[-9, 4, 0, 0, 400, 0, 0, 0, 0, 3, 2, 1, 34, Arial]

OffPageConnector..=[-9, 4, 0, 0, 400, 0, 0, 0, 0, 3, 2, 1, 34, Arial]

Title Block.....=[-9, 4, 0, 0, 400, 0, 0, 0, 0, 3, 2, 1, 34, Arial]

Comment Text.....=[-9, 4, 0, 0, 400, 0, 0, 0, 0, 3, 2, 1, 34, Arial]

Alias.....=[-9, 4, 0, 0, 400, 0, 0, 0, 0, 3, 2, 1, 34, Arial]

A Width=9700

A Height=7200

Pin Name.....=[-9, 4, 0, 0, 400, 0, 0, 0, 0, 3, 2, 1, 34, Arial]

Border Text.....=[-9, 4, 0, 0, 400, 0, 0, 0, 0, 3, 2, 1, 34, Arial]

Page Size=Custom

Is Metric=False

Custom Width=16500

Custom Height=11700

E Width=42200

E Height=32200

D Width=32200

D Height=20200

C Width=20200

C Height=15200

B Width=15200

B Height=9700

Grid Ref Vertical Count=4

Document Number=

Grid Ref Vertical Ascending=1

Title Block Printed=True

Grid Ref Printed=True

Grid Ref Displayed=True

Grid Ref Vertical Alphabetic=0

Grid Ref Horizontal Alphabetic=1

Pin to Pin=100

Parts=Primitive

HierarchicalBlock=NonPrimitive

Title Block Displayed=True

---

Grid Ref Horizontal Ascending=1  
Title Block Style=0  
Organization Address4=  
Cage Code=  
Port.....=[-9, 4, 0, 0, 400, 0, 0, 0, 0, 3, 2, 1, 34, Arial]  
NetName.....=[-9, 4, 0, 0, 400, 0, 0, 0, 0, 3, 2, 1, 34, Arial]  
Hierarchical Block=[-9, 4, 0, 0, 400, 0, 0, 0, 0, 3, 2, 1, 34, Arial]  
Bookmark.....=[-9, 4, 0, 0, 400, 0, 0, 0, 0, 3, 2, 1, 34, Arial]  
PartField8=PCB Footprint  
PartField7=7TH PART FIELD  
PartField6=6TH PART FIELD  
PartField5=5TH PART FIELD  
PartField4=4TH PART FIELD  
PartField3=3RD PART FIELD  
PartField2=2ND PART FIELD  
PartField1=1ST PART FIELD  
Grid Ref Vertical Width=100  
Grid Ref Horizontal Width=100  
Grid Ref Horizontal Count=5

#### 4.15.2 Description

A design template is read when a new project or page is created. It contains all setting you find in Capture -> Options -> Design Template. It should be the same for the whole company to have the same style and looking of all schematic pages.

## 4.16 Preferences

### 4.16.1 Syntax

[Preferences]  
DrawPinArrows....=True  
UndoOnSave.....=True  
AutoReference....=True  
HPathNetName.....=False  
StrokeFont.....=False  
SessionLogFont...=[-14, 6, 0, 0, 0, 0, 0, 0, 0, 0, 0, 0, 0, Arial]  
ViewerShowPinInfo=True  
Autosave.....=False  
FillText.....=False  
DockingPlacePart....=True  
AutosaveMinutes..=15  
FlushCommand.....=True  
EnableITC.....=True  
DragPreference....=True  
PreserveReference....=False  
Journaling.....=False  
IREFGlobalVisibility...=True  
RotateInstPropInContext...=False  
PathLookupTimeout....=10  
EnableLegacyITC.....=False  
SearchToolBar...=True  
JunctionDotSize....=Small  
IncrementalSave..=False



## 4.18 ERC Matrix

### 4.18.1 Syntax

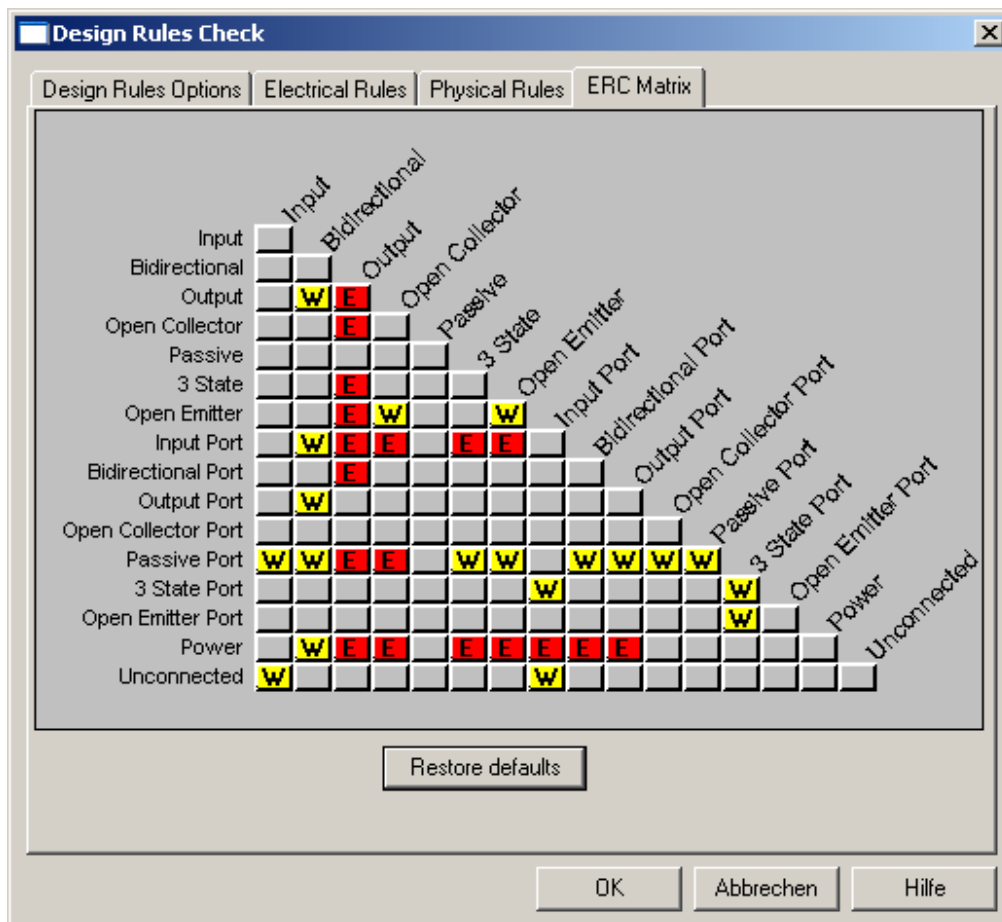
[ERC Matrix]

```

Open Emitter.....=--EW--WE---W--E-
3 State Port.....=-----W---WW--
Input Port.....=-WEE-EE----W-EW
Output Port.....=-W-----W--E-
Power.....=-WEE-EEEE-----
Open Emitter Port..=-----W---
Open Collector.....=-E---WE---E--E-
Open Collector Port=-----W----
Input.....=-----W---W
Unconnected.....=W-----W-----
Bidirectional Port.=--E-----W--E-
Passive.....=-----
Output.....=-WEE-EEEE--E--E-
Bidirectional.....=-W---W-W-W--W-
3 State.....=-E---E--W--E-
Passive Port.....=WWEE-WW-WWWW----
  
```

### 4.18.2 Description

The ERC Matrix settings are use during design rule check. They should be configured for the local company requirements.

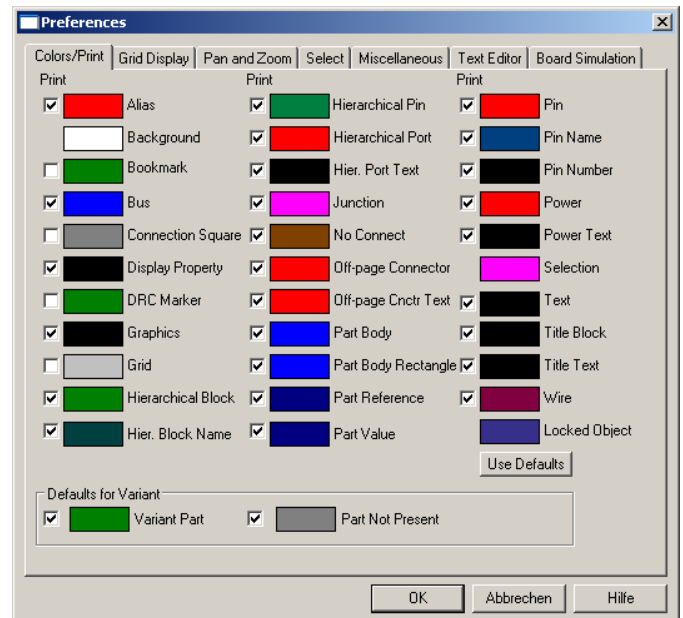


## 4.19 Default Colors

### 4.19.1 Syntax

[Default Colors]

Off-Page Connector Text=RGB(255, 0, 0), TRUE  
Pin=RGB(0, 128, 0), TRUE  
Part Body=RGB(0, 0, 255), TRUE  
DRC Marker=RGB(0, 128, 0), FALSE  
Part Reference=RGB(0, 0, 128), TRUE  
Comment Text=RGB(0, 0, 0), TRUE  
Hierarchical Port=RGB(0, 0, 0), TRUE  
Part Value=RGB(0, 0, 128), TRUE  
Pin Number=RGB(0, 0, 0), TRUE  
DNI Part=RGB(128, 128, 128), TRUE  
Variant Part=RGB(255, 0, 0), TRUE  
Grid=RGB(221, 221, 221), FALSE  
Hierarchical Block Port=RGB(0, 128, 64), TRUE  
Wire=RGB(128, 0, 64), TRUE  
Hierarchical Block=RGB(0, 128, 0), TRUE  
Title Block=RGB(0, 0, 0), TRUE  
Locked Object=RGB(54, 48, 139), TRUE  
Power Text=RGB(0, 0, 0), TRUE  
Display Property=RGB(0, 0, 0), TRUE  
Part Body Rectangle=RGB(0, 255, 255), TRUE  
Connection Square=RGB(128, 128, 128), FALSE  
Off-Page Connector=RGB(0, 0, 0), TRUE  
Alias=RGB(255, 0, 0), TRUE  
Bookmark=RGB(0, 128, 0), FALSE  
Bus=RGB(0, 0, 255), TRUE  
Selection=RGB(255, 0, 255), FALSE  
Background=RGB(255, 255, 255), FALSE  
Hierarchical Port Text=RGB(255, 0, 0), TRUE  
No Connect=RGB(128, 64, 0), TRUE  
Title Text=RGB(0, 0, 0), TRUE  
Junction=RGB(255, 0, 255), TRUE  
Comment Graphics=RGB(0, 0, 0), TRUE  
Hierarchical Block Name=RGB(0, 64, 64), TRUE  
Pin Name=RGB(0, 64, 128), TRUE  
Power=RGB(255, 0, 0), TRUE



### 4.19.2 Description

It contains all Color Setting from Preferences Menu.

---

## 4.20 BoM

### 4.20.1 Syntax

[BoM]

Current Report= Eng Bill Of Materials

Report Names=""Eng Bill Of Materials","Partlist","PickAndPlace""

### 4.20.2 Description

It contains the current BOM template name in the first row and all BOM template names in the second row. The BOM Templates are listed below.

### 4.20.3 Syntax

#### [BoM Eng Bill Of Materials]

Property Count=9

Property0=Item Number

Property1=Quantity

Property2=Part Reference

Property3=Value

Property4=\*Part\_Number

Property5=PCB Footprint

Property6=Manufacturer\_Part\_Number

Include Header=1

Exclude Part References=

Style=0

Export to Excel=1

Reference List Separator=0

Property7=Price

Property8=Datasheet

Property9=MPN3

Property10=Part Type

Property11=PCB Footprint

Property12=STATUS

Property13=Tolerance

Property14=Voltage

Property15=ADDINFO

Property16=^Variant Name

Property17=Pick\_MirroPick\_MirroPick\_MirroPick\_Mirror

Property18=Pick\_Rotation

Property19=Pick\_X

Property20=Pick\_Y

Property21=^OrgAddr3

Property22=^OrgAddr4

Property23=^OrgName

Property24=^Page Count

Property25=Part Type

Property26=Power

Property27=Price

Property28=Rating

Property29=^RevCode

---

Property30=Schematic Part Path  
Property31=Source Library  
Property32=Source Package  
Property33=^Title  
Show Variant Not Stuffed=0  
List Relational Fields=0  
Output Relational Data=0  
Horizontal Bom Output=1  
Max Rows To Output=5  
**[BoM PickAndPlace]**  
Property Count=11  
Property0=Part Reference  
Property1=Value  
Property2=Part Number  
Property3=MOUNTING\_TYPE  
Property4=Part Type  
Property5=PCB Footprint  
Property6=^Variant Name  
Property7=Pick\_X  
Property8=Pick\_Y  
Property9=Pick\_Rotation  
Property10=Pick\_Mirror  
Property11=Pick\_Y  
Property12=Pick\_Mirro  
Property13=Tolerance  
Property14=Voltage  
Property15=ADDINFO  
Property16=^Variant Name  
Property17=Pick\_Rotation  
Property18=Pick\_X  
Property19=Pick\_Y  
Property20=Pick\_Mirro  
Include Header=0  
Exclude Part References=  
Style=1  
Export to Excel=1  
Reference List Separator=0  
**[BoM Partlist]**  
Property Count=15  
Property0=Part Number  
Property1=Quantity  
Property2=Part Reference  
Property3=Value  
Property4=MOUNTING\_TYPE  
Property5=Part Type  
Property6=MPN1  
Property7=MPN2  
Property8=MPN3  
Property9=PCB Footprint  
Property10=Tolerance  
Property11=Voltage  
Property12=ADDINFO  
Property13=STATUS  
Property14=MATERIAL\_DOCUMENTS

---

Property15=Quantity  
Property16=^RevCode  
Property17=Source Library  
Property18=Source Package  
Property19=STATUS  
Property20=Tolerance  
Property21=Voltage  
Property22=Schematic Part Path  
Property23=^Variant Name  
Include Header=0  
Exclude Part References=  
Style=0  
Export to Excel=1  
Reference List Separator=0

## 4.21 Crystal Reports BOM

### 4.21.1 Syntax

[Crystal Reports BOM - D:\Cadence\SPB\_16.3\tools\capture\samples\eng\_bom.rpt]  
Exclude Part References=  
Style=0  
[Crystal Reports BOM]  
MRU0=D:\CADENCE\SPB\_16.3\TOOLS\CAPTURE\SAMPLES\ENG\_BOM.RPT

### 4.21.2 Description

It contains all user crystal report BOM templates

## 4.22 Variant

### 4.22.1 Syntax

[Variant]  
Current Report=Report 1  
Report Names=""Report 1""

### 4.22.2 Description

It contains the current report name in the first row and all report templates in the second row.  
The report template is listed below.

[Variant Report 1]  
Property Count=4  
Property0=Value  
Property1=Description  
Property2=Part Number  
Property3=Part Reference

## 4.23 Variant.LST

### 4.23.1 Syntax

[Variant.LST]

CFGFILEPATH=D:\CADENCE\SPB\_16.3\TOOLS\CAPTURE

### 4.23.2 Description

It describes the path to the configuration file for export of variant.lst. Variant.lst is used by PCB Editor to create variant assembly and BOM

## 4.24 Intersheet References

### 4.24.1 Syntax

[Intersheet References]

IRefStyle=Standard

IRefOnHier=1

IRefOnPage=1

X Offset=20

Y Offset=0

Offset From Name=1

Reset Positions=1

Prefix=P

Suffix=

View Output=0

Report FileName=E:\CIS-TRAINING\LABS\CHAPTER8\CHAPTER8\_SOLUTION.csv

IRefMatch00=1

IRefMatch10=1

IRefMatch11=1

IRefMatch20=1

IRefMatch21=1

IRefMatch22=1

IRefMatch30=1

IRefMatch31=1

IRefMatch32=1

IRefMatch33=1

IRefMatch40=1

IRefMatch41=1

IRefMatch42=1

IRefMatch43=1

IRefMatch44=1

IRefMatch50=1

IRefMatch51=1

IRefMatch52=1

IRefMatch53=1

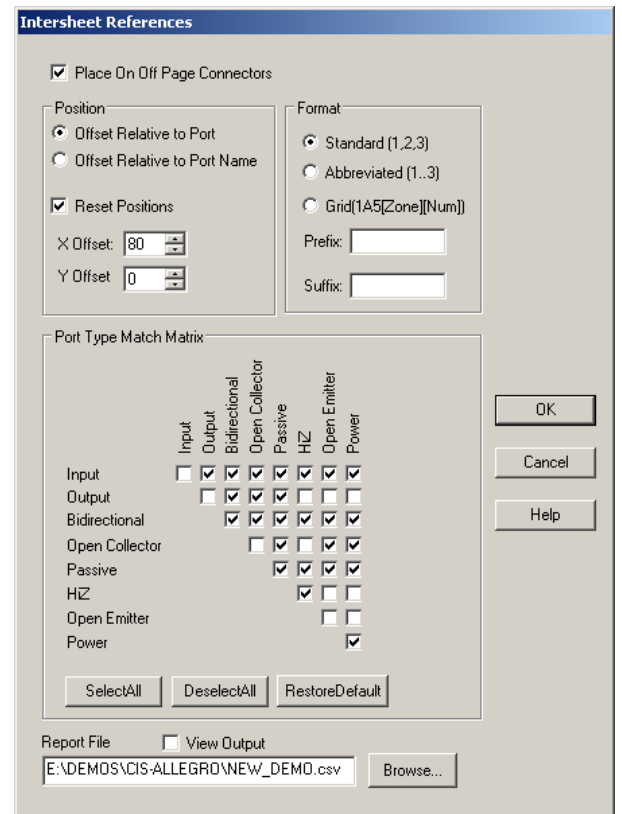
IRefMatch54=1

IRefMatch55=1

IRefMatch60=1

IRefMatch61=1

IRefMatch62=1



---

IRefMatch63=1  
IRefMatch64=1  
IRefMatch65=1  
IRefMatch66=1  
IRefMatch70=1  
IRefMatch71=1  
IRefMatch72=1  
IRefMatch73=1  
IRefMatch74=1  
IRefMatch75=1  
IRefMatch76=1  
IRefMatch77=1

#### **4.24.2 Description**

It contains all Intersheet References settings.

## **4.25 Spreadsheet**

### **4.25.1 Syntax**

[Spreadsheet]

Pivot=1

PrefPropPath=D:\Cadence\SPB\_16.3\tools\capture\prefprop.txt

### **4.25.2 Description**

It contains the pivot status of Property Editor in the first row and path to prefprop.txt in the second row. Prefprop.txt contains all filter settings for Property Editor.

## **4.26 Project Wizard**

### **4.26.1 Syntax**

[Project Wizard]

Project Directory=E:\SCHULUNGSUNTERLAGEN162\ORCAD CAPTURE EMA  
BRANDED\DATABASES\CAPTURE\lesson10

Project Type=0

### **4.26.2 Description**

It contains the folder of the last opened project.

## **4.27 Place Part Search**

### **4.27.1 Syntax**

[Place Part Search]

Search Path=D:\Cadence\SPB\_16.3\tools\capture\library

### **4.27.2 Description**

It contains the path to the libraries for Part Search in Place Part menu.

---

## 4.28 \_\_MRURegList

### 4.28.1 Syntax

[\_\_MRURegList]

Workspace0=Software\OrCAD\CaptureWorkSpace\16.3.0

### 4.28.2 Description

It contains the registry folder where the Workspace settings are stored. If Capture doesn't start, delete the entries under HKEY\_CURRENT\_USER/%Workspace0"

## 4.29 Translators

### 4.29.1 Syntax

[Translators]

Custom out destination=E:\HOTLINE\6817\AC\_PROC\_PERI.EDF

Custom out config=D:\Cadence\SPB\_16.3\tools\capture\CAP2EDI.CFG

### 4.29.2 Description

It contains two path definitions for Config files when importing old DSN or SCM files which have no internal library.

## 4.30 Print Settings

### 4.30.1 Syntax

[Print Settings]

PrintXOffset=0.000000

PrintYOffset=0.000000

PrintBlackWhite=0

PrintOrientation=2

PrintScaleMethod=0

InstanceMode=1

CenterPrintInX=0

PrintPageSizeToScaleTo=0

CenterPrintInY=0

PrinterDevice=CutePDF Writer

IncludeExternalPages=1

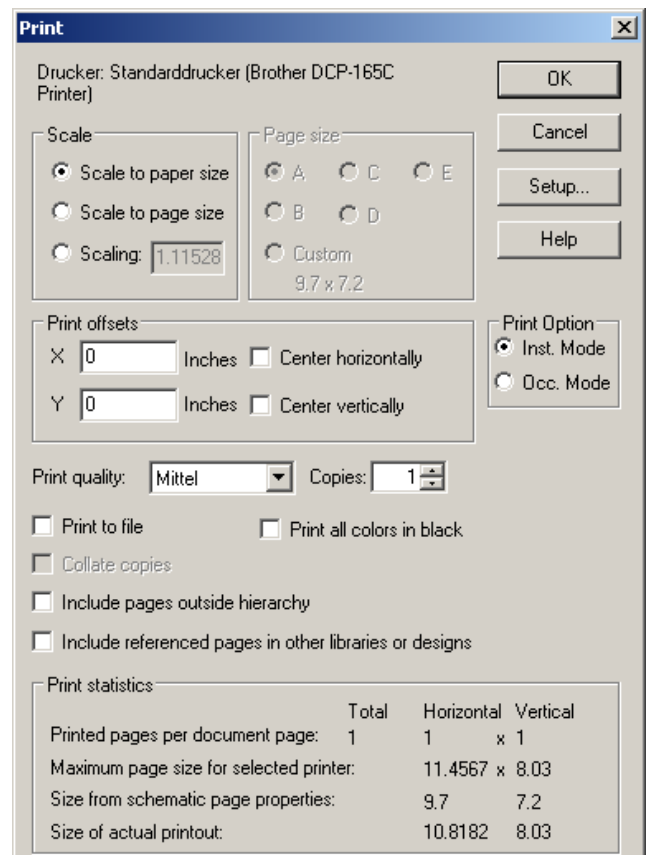
PrintArea=0

IncludePagesOutsideHierarchy=1

PrintScaleFactor=1.000000

### 4.30.2 Description

It contains all settings for printing from menu  
File -> Print.



---

## 4.31 Recent File List

### 4.31.1 Syntax

[Recent File List]

File1=e:\schulungsunterlagen162\orcad capture ema  
branded\databases\capture\release\release.opj  
File2=e:\schulungsunterlagen162\orcad capture ema  
branded\databases\capture\training\training\_solution\_142.opj  
File3=e:\schulungsunterlagen162\orcad capture ema  
branded\databases\capture\intro\intro.opj  
File4=e:\newdemo\grosses\_demo board\cis\_gross\cis\_large.opj  
File5=e:\schulungsunterlagen162\orcad capture ema  
branded\databases\capture\lesson10\lesson10.opj  
File6=E:\HOTLINE\9999\Design1.opj  
File7=e:\demos\cis-allegro\new\_demo.opj  
File8=E:\Schulungsunterlagen162\OrCAD Capture EMA  
BRANDED\Databases\Capture\trng.OLB  
File9=C:\Dokumente und Einstellungen\Beate  
Wilke\Desktop\ToDo\Comprion\4690\LIBRARY1.OLB

### 4.31.2 Description

It contains the last opened files. These could be – projects, libraries, netlist files, BOM and all other report files.

## 4.32 CIS Database Tables

### 4.32.1 Syntax

[2-Resistor]  
Row Height=44  
Column Count=28  
Title1=Table  
Width1=70  
Title2=Part\_Number  
Width2=70  
Title3=Part\_Type  
Width3=70  
Title4=Value  
Width4=70  
Title5=Tolerance  
Width5=70  
Title6=Rating  
Width6=70  
Title7=Description  
Width7=70  
Title8=Schematic Part  
Width8=144  
Title9=PCB Footprint  
Width9=160  
Title10=Height

---

Width10=70  
Title11=ALT\_SYMBOLS  
Width11=174  
Title12=Datasheet  
Width12=70  
Title13=Manufacturer\_Part\_Number  
Width13=89  
Title14=Manufacturer  
Width14=70  
Title15=Price  
Width15=70  
Title16=Availability  
Width16=70  
Title17=UL\_Status  
Width17=70  
Title18=EDA\_Status  
Width18=70  
Title19=Implementation  
Width19=70  
Title20=Model\_3D  
Width20=70  
Title21=Delta\_Rotation  
Width21=70  
Title22=Delta\_x  
Width22=70  
Title23=Delta\_y  
Width23=70  
Title24=BQR\_PartNum  
Width24=70  
Title25=AvtivepartsID  
Width25=70  
Title26=CLASS  
Width26=70  
Title27=HDL\_SYM  
Width27=70  
Title28=PACK\_TYPE  
Width28=70

#### **4.32.2 Description**

It contains the database table name in square brackets and all properties in this database table with the column width in CIS Explorer.